

**RNConsult
PseudoInscriptionService
Cookbook
Version 1.0**

This document is provided to you free of charge by the

eHealth platform

**Willebroekkaai 38 – 1000 Brussel
38, Quai de Willebroeck – 1000 Bruxelles**

All are free to circulate this document with reference to the URL source.

Table of contents

| | |
|---|-----------|
| Table of contents | 2 |
| 1. Document management | 4 |
| 1.1 Document history | 4 |
| 2. Introduction | 5 |
| 2.1 Goal of the service | 5 |
| 2.2 Goal of the document | 5 |
| 2.3 eHealth document references | 5 |
| 2.4 External document references | 5 |
| 3. Support | 6 |
| 3.1 Helpdesk eHealth platform | 6 |
| 3.1.1 Certificates | 6 |
| 3.1.2 For issues in production | 6 |
| 3.1.3 For issues in acceptance | 6 |
| 3.1.4 For business issues | 6 |
| 3.2 Status | 6 |
| 3.3 Authorisation from sectoral committee | 6 |
| 4. Global overview | 7 |
| 5. Flow description | 8 |
| 6. Requirements | 10 |
| 7. Technical Requirements | 11 |
| 7.1.1 WS-I Basic Profile 1.1 | 11 |
| 7.1.2 Tracing | 11 |
| 8. Description of xml messages | 12 |
| 8.1 AddInscription | 12 |
| 8.1.1 Request | 12 |
| 8.1.2 Response | 13 |
| 8.2 RemoveInscription | 14 |
| 8.2.1 Request | 14 |
| 8.2.2 Response | 16 |
| 9. Status | 17 |
| 9.1 Success response | 17 |
| 9.2 Business errors | 17 |
| 9.2.1 AddInscription | 17 |
| 9.2.2 RemoveInscription | 18 |
| 9.3 Technical errors | 19 |
| 10. Test and release procedure | 21 |
| 10.1 Procedure | 21 |
| 10.1.1 Initiation | 21 |
| 10.1.2 Development and test procedure | 21 |
| 10.1.3 Release procedure | 21 |
| 10.1.4 Operational follow-up | 21 |



| | | |
|------------|--|-----------|
| 11. | Example | 22 |
| 11.1 | AddInscription | 22 |
| 11.1.1 | Request..... | 22 |
| 11.1.2 | Success response | 22 |
| 11.2 | RemoveInscription | 23 |
| 11.2.1 | Request..... | 23 |
| 11.2.2 | Success response | 23 |
| 11.2.3 | Business error response | 23 |
| 11.2.4 | Technical error response | 23 |
| 12. | Test cases..... | 25 |
| 12.1 | Register a person | 25 |
| 12.2 | Register a cancelled person | 25 |
| 12.3 | Register a replaced person..... | 26 |
| 12.4 | Register a person that does NOT exist in CBSS register | 27 |
| 12.5 | Register a person with an invalid identifier | 27 |
| 12.6 | Remove a registered person | 28 |
| 12.7 | Remove a NOT registered person | 28 |

To the attention of: "IT expert" willing to integrate this web service.



1. Document management

1.1 Document history

| Version | Date | Author | Description of changes / remarks |
|---------|------------|------------------|----------------------------------|
| 1.0 | 04/04/2023 | eHealth platform | Initial version |

2. Introduction

2.1 Goal of the service

The service PseudoInscriptionService aims at:

- registering a new person in order to receive the notifications
- deleting an existing registration for a person if you do not want to receive notifications regarding this person.

This service is available to all healthcare organisations with a valid eHealth certificate.

2.2 Goal of the document

This document is not a development or programming guide for internal applications. Instead, it provides functional and technical information and allows an organization to integrate and use the eHealth platform service.

However, in order to interact in a smooth, homogeneous and risk controlled way with a maximum of partners, these partners must commit to comply with the requirements of specifications, data format and release processes of the eHealth platform as described in this document.

Technical and business requirements must be met in order to allow the integration and validation of the eHealth platform service in the client application.

2.3 eHealth document references

All documents can be found through the internet. They are available to the public, but not supported by the eHealth platform.

| ID | Title | Version | Date |
|----|---|---------|------------|
| 1 | RNConsult – Pseudonymisation - Cookbook | 1.0 | 04/04/2023 |

2.4 External document references

All documents can be found through the internet. They are available to the public, but not supported by the eHealth platform.

| ID | Title | Source | Date | Author |
|----|---------------------------|---|------------|--|
| 1 | Basic Profile Version 1.1 | http://www.ws-i.org/Profiles/BasicProfile-1.1-2004-08-24.html | 24/08/2004 | Web Services Interoperability Organization |



3. Support

3.1 Helpdesk eHealth platform

3.1.1 Certificates

In order to access the secured eHealth platform environment you have to obtain an eHealth platform certificate, used to identify the initiator of the request. In case you need one, please consult the chapter about the eHealth Certificates on the portal of the eHealth platform

- <https://www.ehealth.fgov.be/ehealthplatform/nl/ehealth-certificaten>
- <https://www.ehealth.fgov.be/ehealthplatform/fr/certificats-ehealth>

For technical issues regarding eHealth platform certificates

- Acceptance: acceptance-certificates@ehealth.fgov.be
- Production: support@ehealth.fgov.be

3.1.2 For issues in production

eHealth platform contact centre:

- Phone: 02 788 51 55 (on working days from 7 am till 8 pm)
- Mail: support@ehealth.fgov.be
- Contact Form :
 - <https://www.ehealth.fgov.be/ehealthplatform/nl/contact> (Dutch)
 - <https://www.ehealth.fgov.be/ehealthplatform/fr/contact> (French)

3.1.3 For issues in acceptance

Integration-support@ehealth.fgov.be

3.1.4 For business issues

- regarding an existing project: the project manager in charge of the application or service
- regarding a new project or other business issues: info@ehealth.fgov.be

3.2 Status

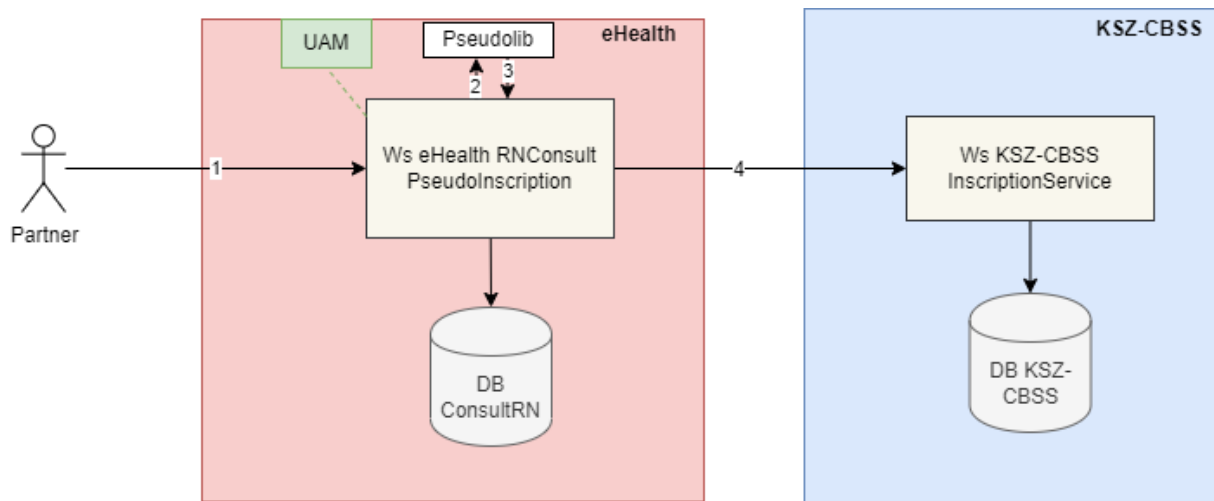
The website <https://status.ehealth.fgov.be> is the monitoring and information tool for the ICT functioning of the eHealth services that are partners of the Belgian eHealth system.

3.3 Authorisation from sectoral committee

The use of RNConsult requires authorisation from the sectorial committee. Only then you will receive an applicationID that will be used to access with specific rights to this service.



4. Global overview



- 1) The institution (identified by a CBE, NIHI or EHP number) authenticates via its software to the eHealth platform and sends a request to the eHealth PseudoInscriptionService service. The SSIN in the request is a pseudonym, which is a SSIN pseudonymised for a defined domain.

Remark:

If you need more information about a pseudonym, a domain and how to get a pseudonym for an input SSIN, please refer to the cookbook "Pseudonymisation REST service" (See section 2.4)

To be able to access the service, the eHealth platform performs the following checks:

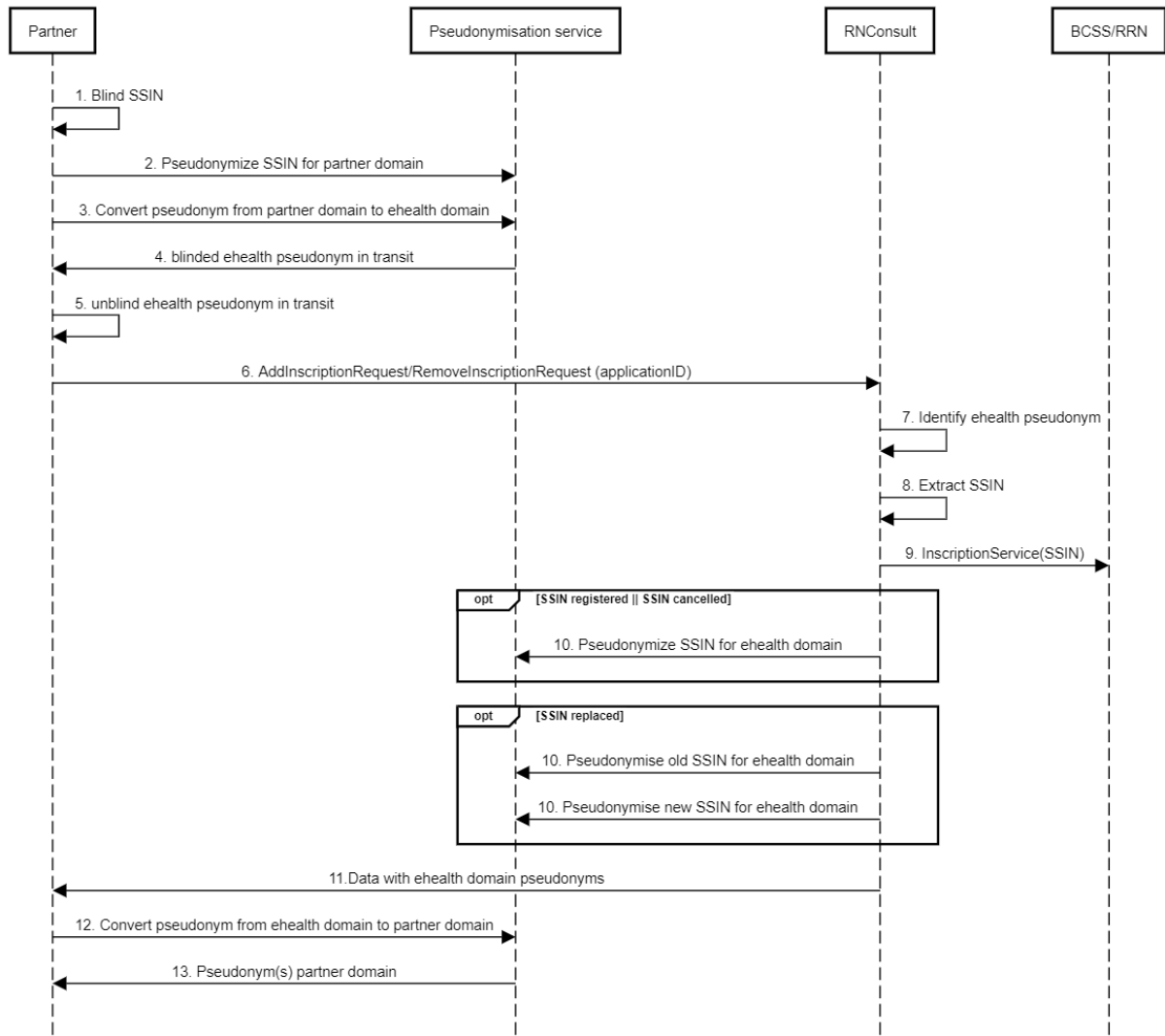
- The authentication of the applicant via his eHealth certificate
 - The configuration of the applicationID in the RNConsult database and the link to the organization.
- 2) Once the verification has been performed, the pseudonymised SSIN is decrypted by the eHealth pseudonymisation service and the eHealth request is transformed into a CBSS request and sent to the KSZ-BCSS Inscription Service.
 - 3) This service registers/deregisters the patient in the KSZ-BCSS database on behalf of eHealth.
 - 4) Once the registration completed, the patient is registered/deregistered in the ConsultRN database for a certain period.
 - 5) eHealth returns information about the registration/deregistering to the institution.

Important: This service is NOT accessible to individual care providers.

5. Flow description

The following sequence diagram provides a detailed perspective on the interactions between the various actors and the different steps involved in calling the *Pseudonymisation REST service*.

Remark: this section assumes that you have already reviewed the “Pseudonymisation REST service” (See section 2.4)



1. The partner blurs the person SSIN
2. The partner needs to use the “Pseudonymisation service” to obtain a pseudonym from blinded input
3. The partner needs to use the “convertTo” resource to convert the pseudonym from their own domain to the eHealth domain
4. The partner receives a blurred pseudonym in transit and has to unblur it
5. The partner needs to unblur the eHealth pseudonym in transit
6. The partner sends a request to RNConsult PseudoInscriptionService with the eHealth pseudonym and the applicationId
7. The RNConsult PseudoInscriptionService identifies the eHealth pseudonym
8. The RNConsult PseudoInscriptionService extracts the SSIN



9. The RNConsult PseudoInscriptionService sends a request to KSZ-BCSS InscriptionService which returns the information about registration/deregistration and executes the registration/deregistration in the ConsultRN database for a limited time.
10. The RNconsult PseudoInscriptionService pseudonymizes the received SSIN(s)
11. The RNConsult PseudoInscriptionService returns the data with the pseudonymized SSIN(s)
12. The Partner needs to use the “convertTo” resource to convert the pseudonym from eHealth domain to the eHealth domain
13. The partner receives the pseudonym input in his own domain.

Remark: To obtain the eHealth domain value for use with the “convert” resource, you will need to call the “domains” resource within the “Pseudonymisation service” and retrieve the domain value where the prefix is "ehealth"



6. Requirements

The call to the service *RNConsult PseudoInscriptionService* is subject to several conditions:

- An authorisation of the sectoral committee and the compliance with the integration procedure.
By applying this procedure, the eHealth platform will provide you with your **applicationID**, which grants specific rights:
- An eHealth certificate, used to identify the initiator of the request.
If you do not have one, please refer to the portal of the eHealth platform¹
- Time synchronisation.
The servers of the eHealth platform are synchronised to a pool of global servers using NTP protocol.
Partner's clock cannot be offsetted by more than 60 seconds against eHealth's or the request could be discarded.
- The partner's domain to get a pseudonym for an input or converting a pseudonym from his own domain to a target domain has been configured across different environments. If not, please refer to the onboarding document in the documentation for guidance (See Chap 2.3)
- To make a call to the "*Pseudonymisation service*", you need to have a client IAM connect configured with the appropriate scope to access the resources for retrieving a pseudonym from an input or converting a pseudonym from their own domain to a target domain.

¹ <https://www.ehealth.fgov.be/ehealthplatform/nl/service-ehealth-certificaten>
<https://www.ehealth.fgov.be/ehealthplatform/fr/service-certificats-ehealth>

7. Technical Requirements

7.1.1 WS-I Basic Profile 1.1

Your request must be WS-I compliant (See Chap 2.4 - External Document Ref).

7.1.2 Tracing

To use this service, the request SHOULD contain the following two http header values (see RFC <https://datatracker.ietf.org/doc/html/rfc7231#section-5.5.3>):

1. User-Agent: information identifying the software product and underlying technical stack/platform. It MUST include the minimal identification information of the software so the emergency contact (see below) can uniquely identify the component.
 - a. Pattern: {minimal software information}/{version} {minimal connector information}/{connector-package-version}
 - b. Regular expression for each subset (separated by a space) of the pattern: `[[a-zA-Z0-9-\\V]*\\V[0-9azA-Z-_.]*`
 - c. Examples:
User-Agent: myProduct/62.310.4 Technical/3.19.0
User-Agent: Topaz-XXXX/123.23.X freeconnector/XXXXX.XXX
2. From: email-address that can be used for emergency contact in case of an operational problem.
Examples:
From: info@mycompany.be

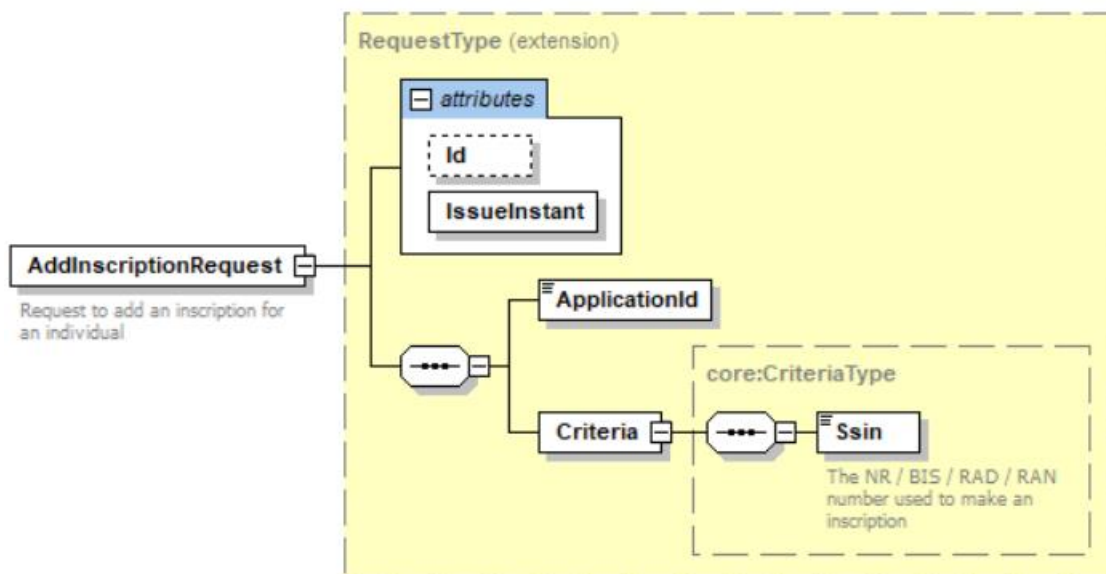
8. Description of xml messages

8.1 AddInscription

This method is used to register an inscription for a person identified by an SSIN number. This inscription is required if the organisation wants to receive the mutations about the person registered.

Note: In order to receive these mutations, the inscription period will be defined according to the deliberation of sectorial committee.

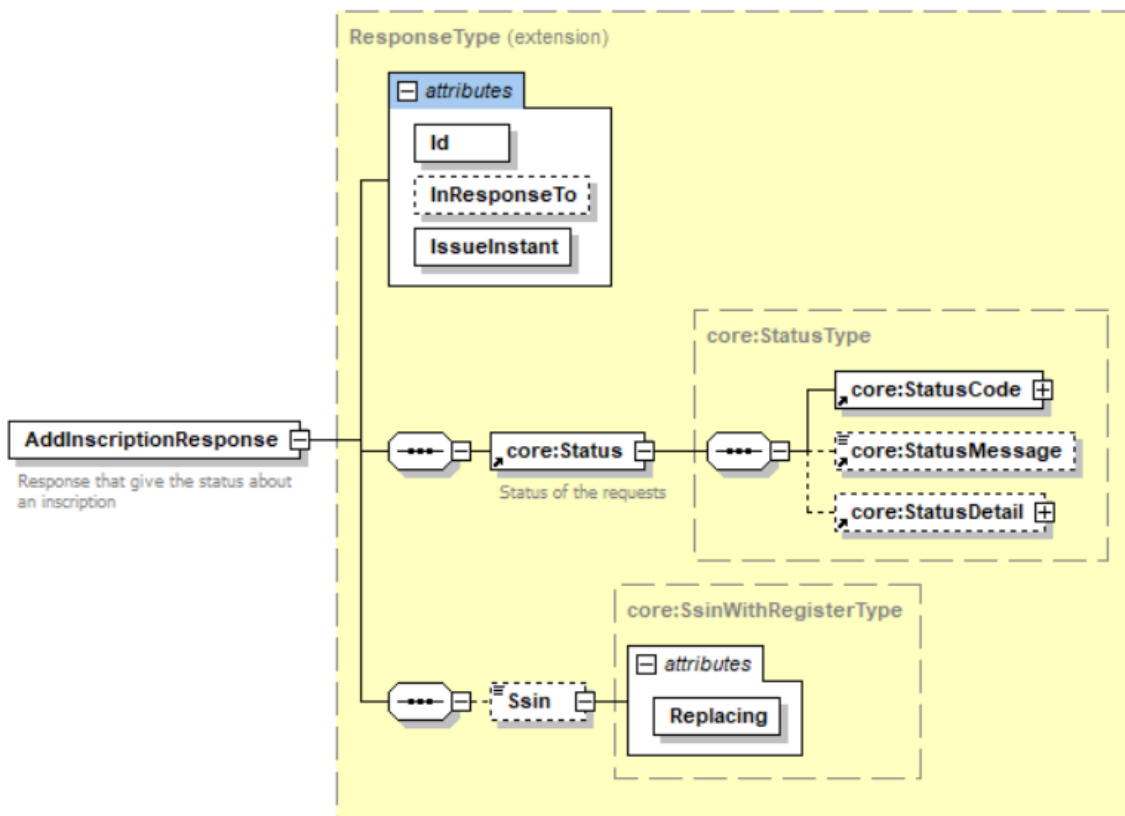
8.1.1 Request



| Field name | Description |
|----------------|---|
| @Id | This attribute contains the number identifying the request. Remark: This field is optional but we recommend adding an identifier to facilitate the follow-up in case of business/technical issue. |
| @issue Instant | This attribute contains the timestamp of the request. |
| ApplicationID | The ApplicationID contains a number given by eHealth identifying the organization and the authorisation given to this organization for a certain purpose. (Same format as an SSIN). |

| | |
|---------------|--|
| Criteria/Ssin | <p>This field contains the pseudonymised SSIN number of the person about whom information is requested..</p> <p>The following structure must be followed for the non-pseudonymised SSIN:</p> <pre> <xsd:pattern value="[0-9][0-9]([0][0-9]) ([1][0-2]) ([0-2][0-9]) ([3][0-1]) ([0-9]{2}[1-9]) ([0-9][1-9][0-9]) ([1-9][0-9]{2}) ([0-8][0-9]) ([9][0-7])"> <xsd:annotation> <xsd:documentation xml:lang="FR">Registre National</xsd:documentation> <xsd:documentation xml:lang="NL">Rijksregister</xsd:documentation> </xsd:annotation> </xsd:pattern> <xsd:pattern value="[0-9][0-9]([2][0-9]) ([3][0-2]) ([0-2][0-9]) ([3][0-1]) ([0-9]{3} ([0-8][0-9]) ([9][0-7]))"> <xsd:annotation> <xsd:documentation xml:lang="FR">Registre Bis : numero Bis</xsd:documentation> <xsd:documentation xml:lang="NL">Bis register : Bisnummer</xsd:documentation> </xsd:annotation> </xsd:pattern> <xsd:pattern value="[0-9][0-9]([4][0-9]) ([5][0-2]) ([0-2][0-9]) ([3][0-1]) ([0-9]{3} ([0-8][0-9]) ([9][0-7]))"> <xsd:annotation> <xsd:documentation xml:lang="FR">Registre Bis : numero TER</xsd:documentation> <xsd:documentation xml:lang="NL">Bisregister : Ternummer</xsd:documentation> </xsd:annotation> </xsd:pattern> </pre> |
|---------------|--|

8.1.2 Response

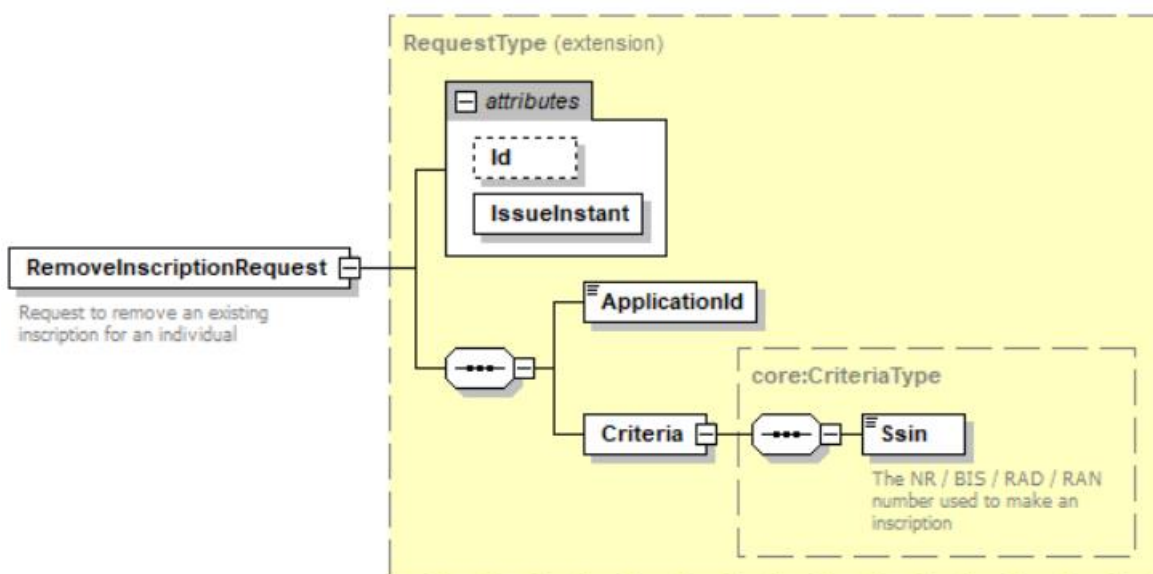


| Field name | Description |
|----------------|---|
| @Id | This attribute contains the number identifying the response. |
| @InResponseTo | This attribute contains the number identifying the request. |
| @IssueInstant | This attribute contains the timestamp of the response. |
| Status | This block contains information about the status of the response returned. (See section 9) |
| Ssin | This field contains the current pseudonymised SSIN of the person: <ul style="list-style-type: none"> If a SSIN is not replaced by another one, the value will be the pseudonymised SSIN requested. If a SSIN is replaced by another one, the value will be the pseudonymised current SSIN. The previous one will be present in the attribute <i>Ssin/@Replaces</i>. |
| Ssin/@Replaces | This field contains the previous pseudonymised SSIN of the person in case it has been replaced. |

8.2 RemoveInscription

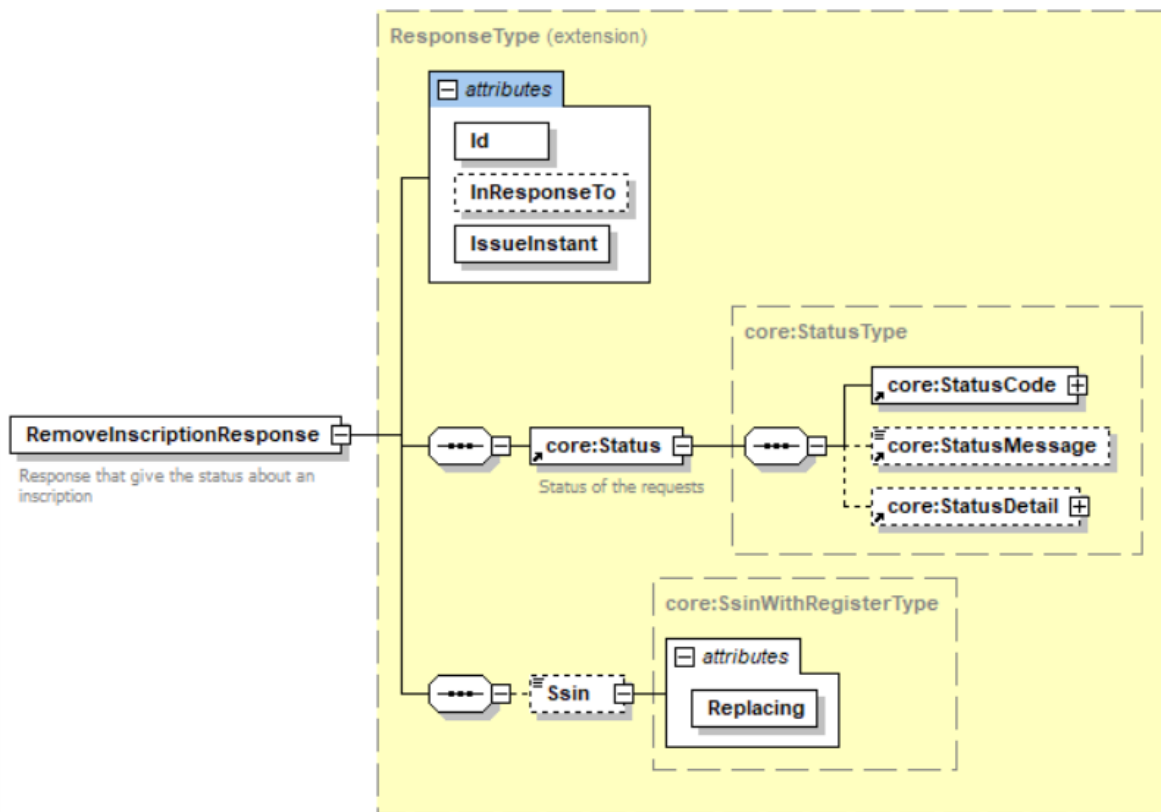
This method is used to remove an existing inscription for a person identified by an SSIN number. When the inscription is removed, you will no longer receive mutations.

8.2.1 Request



| Field name | Description |
|----------------|--|
| @Id | This attribute contains the number identifying the request. Remark: this field is optional but we recommend adding an identifier to facilitate the follow-up in case of business/technical issue. |
| @issue Instant | This attribute contains the timestamp of the request. |
| ApplicationID | The ApplicationID contains a number given by eHealth identifying the organization and the authorisation given for a certain purpose to this organization. (Same format as an SSIN) |
| Criteria/Ssin | <p>This field contains the pseudonymised SSIN of the person to request information.</p> <p>The following structure must be followed for the non-pseudonymised SSIN:</p> <pre> <xsd:pattern value="[0-9][0-9]([0][0-9]) ([1][0-2]))([0-2][0-9]) ([3][0-1]))([0-9]{2}[1-9]) ([0-9][1-9][0-9]) ([1-9][0-9]{2}))([0-8][0-9]) ([9][0-7])"> <xsd:annotation> <xsd:documentation xml:lang="FR">Registre National</xsd:documentation> </xsd:annotation> </xsd:pattern> <xsd:pattern value="[0-9][0-9]([2][0-9]) ([3][0-2]))([0-2][0-9]) ([3][0-1]))[0-9]{3}([0-8][0-9]) ([9][0-7])"> <xsd:annotation> <xsd:documentation xml:lang="FR">Registre Bis : numero Bis</xsd:documentation> <xsd:documentation xml:lang="NL">Bis register : Bisnummer</xsd:documentation> </xsd:annotation> </xsd:pattern> <xsd:pattern value="[0-9][0-9]([4][0-9]) ([5][0-2]))([0-2][0-9]) ([3][0-1]))[0-9]{3}([0-8][0-9]) ([9][0-7])"> <xsd:annotation> <xsd:documentation xml:lang="FR">Registre Bis : numero TER</xsd:documentation> <xsd:documentation xml:lang="NL">Bisregister : Ternummer</xsd:documentation> </xsd:annotation> </xsd:pattern> </pre> |

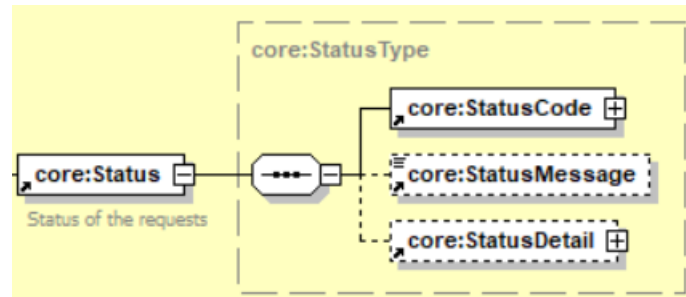
8.2.2 Response



| Field name | Description |
|-----------------|--|
| @Id | This attribute contains the number identifying the response. |
| @InResponseTo | This attribute contains the number identifying the request. |
| @IssueInstant | This attribute contains the timestamp of the response. |
| Status | This block contains information about the status of the response returned. (See section 9) |
| Ssin | This field contains the current pseudonymised SSIN of the person: <ul style="list-style-type: none"> If the SSIN is not replaced by another one, the value will be the requested pseudonymised SSIN. If the SSIN is replaced by another one, the value will be the current pseudonymised SSIN. The previous pseudonymised SSIN will be present in the attribute <i>Ssin/@Replacing</i>. |
| Ssin/@Replacing | This field contains the previous pseudonymised SSIN of the person in case it has been replaced. |

9. Status

When you call the service, the Status element contains the information as to the success or error for this request.



| Field name | Description |
|---------------|--|
| StatusCode | This field contains the status code. |
| StatusMessage | This field contains the description of the status code. |
| StatusDetail | This field contains additional information about the status. |

9.1 Success response

In case of success response, the element status will contain the following information:

```

<ns2:Status>
  <ns2:StatusCode Value="urn:be:fgov:ehhealth:2.0:status:Success"/>
</ns2:Status>
  
```

9.2 Business errors

In the case of a business error, the element status will contain the following information:

9.2.1 AddInscription

| Error Description | Element eHealth | Solution |
|----------------------------|--|--|
| ApplicationID is malformed | <pre> <Status> <StatusCode Value="urn:be:fgov:ehhealth:2.0:status:Requester"> <StatusCode Value="urn:be:fgov:ehhealth:2.0:status:InvalidInput"> </StatusCode> <StatusMessage>The applicationId is malformed</StatusMessage> </Status> </pre> | <p>The applicationID is not valid.</p> <p>Please use a correct application Id in your request.</p> |
| Ssin is malformed | <pre> <Status> <StatusCode Value="urn:be:fgov:ehhealth:2.0:status:Requester"> <StatusCode Value="urn:be:fgov:ehhealth:2.0:status:InvalidInput"> </StatusCode> <StatusMessage>The ssin is malformed</StatusMessage> </Status> </pre> | <p>The SSIN number is not valid. Please check the structure of SSIN number.</p> |

| | | |
|--|--|---|
| No right configured to call the web service | <pre><Status> <StatusCode Value="urn:be:fgov:health:2.0:status:Requester"> <StatusCode Value="urn:be:fgov:health:2.0:status:RequestDenied"> </StatusCode> <StatusMessage>No right configured to call the web service </StatusMessage> </Status></pre> | The applicationID is not allowed to call the web service. Please refer to the contact center. |
| Access to this operation is not allowed with the given legal context and credentials | <pre><Status> <StatusCode Value="urn:be:fgov:health:2.0:status:Requester"> <StatusCode Value="urn:be:fgov:health:2.0:status:InvalidInput"> </StatusCode> <StatusMessage>Access to this operation is not allowed with the given legal context and credentials</StatusMessage> </Status></pre> | The request to the service is forbidden. Please refer to the contact center. |
| Cause unknown | <pre><Status> <StatusCode Value="urn:be:fgov:health:2.0:status:Requester " > <StatusCode Value="urn:be:fgov:health:2.0:status:Indeterminate"> </StatusCode> <StatusMessage>Cause unknown</StatusMessage> </Status></pre> | Please refer to the contact center. |

9.2.2 RemoveInscription

| Error Description | Element eHealth | Solution |
|--|--|---|
| ApplicationID is malformed | <pre><Status> <StatusCode Value="urn:be:fgov:health:2.0:status:Requester"> <StatusCode Value="urn:be:fgov:health:2.0:status:InvalidInput"> </StatusCode> <StatusMessage>The applicationId is malformed</StatusMessage> </Status></pre> | The applicationID is not valid. Please use a correct application Id in your request. |
| Ssin is malformed | <pre><Status> <StatusCode Value="urn:be:fgov:health:2.0:status:Requester"> <StatusCode Value="urn:be:fgov:health:2.0:status:InvalidInput"> </StatusCode> <StatusMessage>The ssin is malformed</StatusMessage> </Status></pre> | The SSIN number is not valid. Please check the structure of SSIN number. |
| No inscription exists | <pre><StatusCode Value="urn:be:fgov:health:2.0:status:Requester " > <StatusCode Value="urn:be:fgov:health:2.0:status:InvalidInput"> </StatusCode> <StatusMessage>No inscription exists</StatusMessage></pre> | There is no existing inscription for the person. |
| No right configured to call the web service | <pre><Status> <StatusCode Value="urn:be:fgov:health:2.0:status:Requester"> <StatusCode Value="urn:be:fgov:health:2.0:status:RequestDenied"> </StatusCode> <StatusMessage>No right configured to call the web service </StatusMessage> </Status></pre> | The applicationID is not allowed to call the web service. Please refer to the contact center. |
| Access to this operation is not allowed with the given legal context and credentials | <pre><Status> <StatusCode Value="urn:be:fgov:health:2.0:status:Requester"> <StatusCode Value="urn:be:fgov:health:2.0:status:InvalidInput"> </StatusCode> <StatusMessage>Access to this operation is not allowed with the given legal context and credentials</StatusMessage> </Status></pre> | The request to the service is forbidden. Please refer to the contact center. |
| Cause unknown | <pre><Status> <StatusCode Value="urn:be:fgov:health:2.0:status:Requester " > <StatusCode Value="urn:be:fgov:health:2.0:status:Indeterminate"> </StatusCode> <StatusMessage>Cause unknown</StatusMessage> </Status></pre> | Please refer to the contact center. |

9.3 Technical errors

- In the case of a technical error at KSZ-BCSS , the element status will contain the following information:

```
<ns2:Status>
  <ns2:StatusCode Value="urn:be:fgov:ehealth:2.0:status:Responder"/>
</ns2:Status>
```

- In the case of a technical error at eHealth , a SOAP fault exception is returned with the following status :

| Error code | Component | Description | Solution |
|------------|----------------|---|--|
| SOA-00001 | Not determined | Service error | This is the default error sent to the consumer in case more details are missing. |
| SOA-01001 | Consumer | Service call not authenticated | Information provided by security: <ul style="list-style-type: none"> or the consumer could not be identified. or the credentials provided are not correct. |
| SOA-01002 | Consumer | Service call not authorized | The consumer is identified and authenticated, but is not allowed to call the given service. |
| SOA-02001 | Provider | Service not available. Please contact service desk | An unexpected error has occurred. <ul style="list-style-type: none"> Retries will not work Service desk may help with root cause analysis |
| SOA-02002 | Provider | Service temporarily not available. Please try later | An unexpected error has occurred: <ul style="list-style-type: none"> Retries should work If the problem persists service desk may help |
| SOA-03001 | Consumer | Malformed message | This is default error for content related errors in case further details are missing.. |
| SOA-03002 | Consumer | Message must be SOAP | Message does not respect the SOAP standard. |
| SOA-03003 | Consumer | Message must contain SOAP body | Message respects the SOAP standard, but body is missing. |
| SOA-03004 | Consumer | WS-I compliance failure | Message does not respect the WS-I standard. |

| | | | |
|-----------|----------|------------------------------------|--|
| SOA-03005 | Consumer | WSDL compliance failure | Message is not compliant with WSDL in Registry/Repository. |
| SOA-03006 | Consumer | XSD compliance failure | Message is not compliant with XSD in Registry/Repository. |
| SOA-03007 | Consumer | Message content validation failure | From the message content (conform XSD): <ul style="list-style-type: none"> • Extended checks on the element format failed • Cross-checks between fields failed |

10. Test and release procedure

10.1 Procedure

This chapter explains the procedures for testing and releasing an application in acceptance or production.

10.1.1 Initiation

If you intend to use the eHealth platform service, please contact info@ehealth.fgov.be. The project department will provide you with the necessary information and mandatory documents.

10.1.2 Development and test procedure

You have to develop a client in order to connect to our WS. Most of the required info on how to integrate is published on the portal of the eHealth platform.

Upon request, the eHealth platform provides you in some cases with test cases allowing you to test your client before the release in the acceptance environment.

10.1.3 Release procedure

When development tests are successful, you can request to access the acceptance environment of the eHealth platform. From this moment, you start the integration and acceptance tests. The eHealth platform suggests testing during minimum one month.

After successful acceptance tests, the partner sends his test and performance results with a sample of “eHealth request” and “eHealth answer” by email to his point of contact at the eHealth platform.

Then the eHealth platform and the partner agree on a release date. The eHealth platform prepares the connection to the production environment and provides the partner with the necessary information. During the release day, the partner provides the eHealth platform with feedback on the test and performance tests.

For further information and instructions, please contact: integration-support@ehealth.fgov.be.

10.1.4 Operational follow-up

Once in production, the partner using the eHealth platform service for one of his applications will always test first in the acceptance environment before releasing any adaptations of the application in production. In addition, he will inform the eHealth platform on the progress and test period.



11. Example

11.1 AddInscription

11.1.1 Request

```
<urn:AddInscriptionRequest Id="idRequest" IssueInstant="2020-06-05T11:03:59.810+02:00">
  <urn:ApplicationId>XXXXXXXXXXXX</urn:ApplicationId>
  <urn:Criteria>
    <Ssin>eyJpZCI6IjJjMzNTYzLTlwNDctNDJjMS04OTYyLTgxMDEzMmI0YWQ3MiIsImRvbWFPbiI6ImVoZWZsdGhfdjEiLCJjcniY0iJQlTUyMSIsIm1hdCI6MTY3ODExMjA2NywiZXhwIjoxNjc4MTEyNjY3LCJ4IjojQWEyTlFFdDNXNmY4b1p5UEEUVXM3dw03azlWaDJAaEFLbmZpVVcwMS9QUHFZSEFnNXAxK1FhYWp3K1lCaFNTUnE4ZlVXeVBWN3Z2QnN4N0lzekNLK0dRTSIsInkiOiJBWm5jwlrwVvOUtpODExcmdiTUtsUXhUZnJnZnQrWVdlRUwxdogrOTN1V1VlbG5kN2UzTFFXbm44MnBCMDQvaUlTVVRUam4zdmVyRU5QaSsrbzMaFd0IiwidHJhbnNpdEluZm8iOiJleUpoYkdjaU9pSmthWElpTENKbGJtTWlPaUpCTWpVMIWtk5JaXdpYTJsa0lqb2lNakF5TXkwd01TSXNJbUYxWkNjNk1taDBkSEJ6T2k4d1lYQnBMV2x1ZEM1bGFHVmhiSFJvTG1abmIzWXVZbV2Y0hObGRXUnZMM114TDJSdmJXRnBibk12WldobFlXeDBhRjkyTVNKOS4uUk9aS3VoTktYczQ3cUdiSy5JkVaUG5LT0M3WnZ3anUtBU40eJbQYmZxbHo4M0xxMFMZxhXS256eHcyQWFxQjZRUENZVjFyY1ZacC04MU9hMwo4T19UuzhqUFQwbEtHY1JPLUVuME43Z2Y1aEYxUGYtMG9RUUxubU42SkYyZUxZSmZaOVZfbzBvcFNvZm1xb2R5UlhlRD1Bckc0VTdDaURiZDZjRlJ4d21zTmZXNE14czJwV0ZReXlQkktESGVPdHdUYjh0cDZkUEXhdG4xeVZPVlhhdwZuWWRlbn11WFkwRG5KcndENWFjvJjQZHhFVmNQT2dPYkFCQlpkUEhGNjYtWVVLcW9qbVgyewROalNkbFEzUjIxdFZTUmnajJZbS5jeVHwDBGdFNpYUjhR2NPSTh1MUlRIn0=</Ssin>
  </urn:Criteria>
</urn:AddInscriptionRequest>
```

11.1.2 Success response

```
<ns3:AddInscriptionResponse Id="Id-XXXXXX" InResponseTo="idRequest" IssueInstant="2020-06-05T11:04:01.688+02:00" xmlns:ns2="urn:be:fgov:ehealth:commons:core:v2" xmlns:ns3="urn:be:fgov:ehealth:rn:inscriptionservice:protocol:v1" xmlns:ns5="urn:be:fgov:ehealth:rn:registries:commons:v1" xmlns:ns6="urn:be:fgov:ehealth:rn:commons:business:v1" xmlns:ns7="urn:be:fgov:ehealth:errors:soa:v1" xmlns:ns8="urn:be:fgov:ehealth:errors:service:v1">
  <ns2:Status>
    <ns2:StatusCode Value="urn:be:fgov:ehealth:2.0:status:Success"/>
  </ns2:Status>
  <ns3:Ssin Replacing="false">eyJpZCI6IjJjMzNTYzLTlwNDctNDJjMS04OTYyLTgxMDEzMmI0YWQ3MiIsImRvbWFPbiI6ImVoZWZsdGhfdjEiLCJjcniY0iJQlTUyMSIsIm1hdCI6MTY3ODExMjA2NywiZXhwIjoxNjc4MTEyNjY3LCJ4IjojQWEyTlFFdDNXNmY4b1p5UEEUVXM3dw03azlWaDJAaEFLbmZpVVcwMS9QUHFZSEFnNXAxK1FhYWp3K1lCaFNTUnE4ZlVXeVBWN3Z2QnN4N0lzekNLK0dRTSIsInkiOiJBWm5jwlrwVvOUtpODExcmdiTUtsUXhUZnJnZnQrWVdlRUwxdogrOTN1V1VlbG5kN2UzTFFXbm44MnBCMDQvaUlTVVRUam4zdmVyRU5QaSsrbzMaFd0IiwidHJhbnNpdEluZm8iOiJleUpoYkdjaU9pSmthWElpTENKbGJtTWlPaUpCTWpVMIWtk5JaXdpYTJsa0lqb2lNakF5TXkwd01TSXNJbUYxWkNjNk1taDBkSEJ6T2k4d1lYQnBMV2x1ZEM1bGFHVmhiSFJvTG1abmIzWXVZbV2Y0hObGRXUnZMM114TDJSdmJXRnBibk12WldobFlXeDBhRjkyTVNKOS4uUk9aS3VoTktYczQ3cUdiSy5JkVaUG5LT0M3WnZ3anUtBU40eJbQYmZxbHo4M0xxMFMZxhXS256eHcyQWFxQjZRUENZVjFyY1ZacC04MU9hMwo4T19UuzhqUFQwbEtHY1JPLUVuME43Z2Y1aEYxUGYtMG9RUUxubU42SkYyZUxZSmZaOVZfbzBvcFNvZm1xb2R5UlhlRD1Bckc0VTdDaURiZDZjRlJ4d21zTmZXNE14czJwV0ZReXlQkktESGVPdHdUYjh0cDZkUEXhdG4xeVZPVlhhdwZuWWRlbn11WFkwRG5KcndENWFjvJjQZHhFVmNQT2dPYkFCQlpkUEhGNjYtWVVLcW9qbVgyewROalNkbFEzUjIxdFZTUmnajJZbS5jeVHwDBGdFNpYUjhR2NPSTh1MUlRIn0=</ns3:Ssin>
```



```
</ns3:AddInscriptionResponse>
```

11.2 RemoveInscription

11.2.1 Request

```
<urn:RemoveInscriptionRequest Id="Id-XXXXXX" IssueInstant="2020-06-05T13:47:16.555+02:00">  
  <urn:ApplicationId>XXXXXXXXXXXX</urn:ApplicationId>  
  <urn:Criteria>  
    <Ssin>12345678910</Ssin>  
  </urn:Criteria>  
</urn:RemoveInscriptionRequest>
```

11.2.2 Success response

```
<ns3:RemoveInscriptionResponse Id="Id-XXXXXX" InResponseTo="idRequest" IssueInstant="2020-06-05T11:04:01.688+02:00" xmlns:ns2="urn:be:fgov:ehhealth:commons:core:v2" xmlns:ns3="urn:be:fgov:ehhealth:rn:inscriptionservice:protocol:v1" xmlns:ns5="urn:be:fgov:ehhealth:rn:registries:commons:v1" xmlns:ns6="urn:be:fgov:ehhealth:rn:commons:business:v1" xmlns:ns7="urn:be:fgov:ehhealth:errors:soa:v1" xmlns:ns8="urn:be:fgov:ehhealth:errors:service:v1">  
  <ns2:Status>  
    <ns2:StatusCode Value="urn:be:fgov:ehhealth:2.0:status:Success"/>  
  </ns2:Status>  
  <ns3:Ssin Replacing="false">12345678910</ns3:Ssin>  
</ns3:RemoveInscriptionResponse>
```

11.2.3 Business error response

```
<ns3:RemoveInscriptionResponse Id="Id-XXXXXX" InResponseTo="id1" IssueInstant="2020-06-05T13:47:17.454+02:00" xmlns:ns2="urn:be:fgov:ehhealth:commons:core:v2" xmlns:ns3="urn:be:fgov:ehhealth:rn:inscriptionservice:protocol:v1" xmlns:ns5="urn:be:fgov:ehhealth:rn:registries:commons:v1" xmlns:ns6="urn:be:fgov:ehhealth:rn:commons:business:v1" xmlns:ns7="urn:be:fgov:ehhealth:errors:soa:v1" xmlns:ns8="urn:be:fgov:ehhealth:errors:service:v1">  
  <ns2:Status>  
    <ns2:StatusCode Value="urn:be:fgov:ehhealth:2.0:status:Requester">  
      <ns2:StatusCode Value="urn:be:fgov:ehhealth:2.0:status:InvalidInput"/>  
    </ns2:StatusCode>  
    <ns2:StatusMessage>No inscription exists</ns2:StatusMessage>  
  </ns2:Status>
```

11.2.4 Technical error response

```
<ns5:RemoveInscriptionResponse Id="Id-XXXXXX" InResponseTo="idRequest" IssueInstant="2020-02-28T15:20:50.190+01:00" xmlns:ns2="urn:be:fgov:ehhealth:commons:core:v2" xmlns:ns4="urn:be:
```



```
fgov:ehhealth:rn:inscriptionservice:core:v1" xmlns:ns5="urn:be:fgov:ehhealth:rn:inscription
service:protocol:v1" xmlns:ns6="urn:be:fgov:ehhealth:rn:registries:commons:v1" xmlns:ns7="
urn:be:fgov:ehhealth:rn:commons:business:v1" xmlns:ns8="urn:be:fgov:ehhealth:errors:soa:v1"
xmlns:ns9="urn:be:fgov:ehhealth:errors:service:v1">
  <ns2:Status>
    <ns2:StatusCode Value="urn:be:fgov:ehhealth:2.0:status:Responder"/>
    <ns2:StatusMessage>Received technical error from CBSS</ns2:StatusMessage>
    <ns2:StatusDetail>
      <ns7:Message>
        < ns7:Severity>FATAL</ns7:Severity>
        < ns7:ReasonCode>MSG00003</ns7:ReasonCode>
        < ns7:Diagnostic>Internal error</ns7:Diagnostic>
        < ns7:AuthorCode>http://www.ksz-bcss.fgov.be/</ns7:AuthorCode>
      </ns7:Message>
    </ns2:StatusDetail>
  </ns2:Status>
</ns5:SearchPersonPhoneticallyResponse >
```


12. Test cases

In this section, you will find some test cases to verify the implementation of your service.

Remark: In these examples, the input SSIN needs to be pseudonymised before sending the request. For the sake of simplicity, we have kept the SSIN in these examples in clear text.

12.1 Register a person

| | |
|-------------------------|---|
| <i>Description</i> | The user registers a person in order to receive mutations. |
| <i>Input</i> | SSIN: 70481606005 |
| <i>Expected outputs</i> | <p>The service returns success response.</p> <pre><SOAP-ENV:Envelope xmlns:SOAP-ENV="http://schemas.xmlsoap.org/soap/envelope/"> <SOAP-ENV:Header/> <SOAP-ENV:Body> <ns3:AddInscriptionResponse Id="Id-6c4e895fb56c5be00c7bb96d" InResponseTo="id1" IssueInstant="2020-10-16T09:40:30.774+02:00" xmlns:ns2="urn:be:fgov:health:commons:core:v2" xmlns:ns3="urn:be:fgov:health:rn:inscriptionservice:protocol:v1" xmlns:ns4="urn:be:fgov:health:rn:registries:commons:v1" xmlns:ns5="urn:be:fgov:health:rn:commons:business:v1" xmlns:ns7="urn:be:fgov:health:errors:soa:v1" xmlns:ns8="urn:be:fgov:health:errors:service:v1"> <ns2:Status> <ns2:StatusCode Value="urn:be:fgov:health:2.0:status:Success"/> </ns2:Status> <ns3:Ssin Replacing="false">70481606005</ns3:Ssin> </ns3:AddInscriptionResponse> </SOAP-ENV:Body> </SOAP-ENV:Envelope></pre> |

12.2 Register a cancelled person

| | |
|-------------------------|--|
| <i>Description</i> | The user registers a cancelled person. |
| <i>Input</i> | SSIN: 56000308828 |
| <i>Expected outputs</i> | <p>The service returns a business error with the status: <i>data not found</i>.</p> <pre>/"> <SOAP-ENV:Header/> <SOAP-ENV:Body> <ns3:AddInscriptionResponse Id="Id-6c47895f084ce92e4e30c33c" InResponseTo="id1" IssueInstant="2020-10-16T09:10:38.390+02:00" xmlns:ns2="urn:be:fgov:health:commons:core:v2" xmlns:ns3="urn:be:fgov:health:rn:inscriptionservice:protocol:v1" xmlns:ns4="urn:be:fgov:health:rn:registries:commons:v1" xmlns:ns5="urn:be:fgov:health:rn:</pre> |



```

commons:business:v1" xmlns:ns7="urn:be:fgov:health:errors:soa:v1" xmlns:ns8
="urn:be:fgov:health:errors:service:v1">
  <ns2:Status>
    <ns2:StatusCode Value="urn:be:fgov:health:2.0:status:Requester"
  >
    <ns2:StatusCode Value="urn:be:fgov:health:2.0:status:DataNot
Found"/>
  </ns2:StatusCode>
  <ns2:StatusMessage>SSIN cancelled</ns2:StatusMessage>
</ns2:Status>
<ns3:Ssin Replacing="false">56000308828</ns3:Ssin>
</ns3:AddInscriptionResponse>
</SOAP-ENV:Body>
</SOAP-ENV:Envelope>

```

12.3 Register a replaced person

| | |
|-------------------------|---|
| <i>Description</i> | The user registers a person whose SSIN has been replaced by another SSIN. |
| <i>Input</i> | SSIN: 49242300517 |
| <i>Expected outputs</i> | <p>The service returns the current SSIN to the user.</p> <p>Note: The previous SSIN will be not registered and you need to call the operation <i>AddInscription</i> with the current SSIN to receive mutations.</p> <pre> <SOAP-ENV:Envelope xmlns:SOAP- ENV="http://schemas.xmlsoap.org/soap/envelope/"> <SOAP-ENV:Header/> <SOAP-ENV:Body> <ns3:AddInscriptionResponse Id="Id- 7048895fd954e6eb2a7cdfdb" InResponseTo="id1" IssueInstant="2020-10- 16T09:14:58.017+02:00" xmlns:ns2="urn:be:fgov:health:commons:core:v2" xmlns :ns3="urn:be:fgov:health:rn:inscriptionservice:protocol:v1" xmlns:ns4="urn: be:fgov:health:rn:registries:commons:v1" xmlns:ns5="urn:be:fgov:health:rn: commons:business:v1" xmlns:ns7="urn:be:fgov:health:errors:soa:v1" xmlns:ns8 ="urn:be:fgov:health:errors:service:v1"> <ns2:Status> <ns2:StatusCode Value="urn:be:fgov:health:2.0:status:Success"/> </ns2:Status> <ns3:Ssin Replacing="true">49442002236</ns3:Ssin> </ns3:AddInscriptionResponse> </SOAP-ENV:Body> </SOAP-ENV:Envelope> </pre> |

12.4 Register a person that does NOT exist in CBSS register

| | |
|-------------------------|---|
| <i>Description</i> | The user registers a person who does not exist in CBSS register. |
| <i>Input</i> | SSIN: 81490230530 |
| <i>Expected outputs</i> | <p>The service returns a business error with the status: SSIN cancelled.</p> <pre> <SOAP-ENV:Envelope xmlns:SOAP- ENV="http://schemas.xmlsoap.org/soap/envelope/"> <SOAP-ENV:Header/> <SOAP-ENV:Body> <ns3:AddInscriptionResponse Id="Id- 1f4e895f07634bdfec102a33" InResponseTo="id1" IssueInstant="2020-10- 16T09:39:13.288+02:00" xmlns:ns2="urn:be:fgov:health:commons:core:v2" xmlns :ns3="urn:be:fgov:health:rn:inscriptionservice:protocol:v1" xmlns:ns4="urn: be:fgov:health:rn:registries:commons:v1" xmlns:ns5="urn:be:fgov:health:rn: commons:business:v1" xmlns:ns7="urn:be:fgov:health:errors:soa:v1" xmlns:ns8 ="urn:be:fgov:health:errors:service:v1"> <ns2:Status> <ns2:StatusCode Value="urn:be:fgov:health:2.0:status:Requester" > <ns2:StatusCode Value="urn:be:fgov:health:2.0:status:DataNot Found"/> </ns2:StatusCode> <ns2:StatusMessage>SSIN unknown</ns2:StatusMessage> </ns2:Status> </ns3:AddInscriptionResponse> </SOAP-ENV:Body> </SOAP-ENV:Envelope> </pre> |

12.5 Register a person with an invalid identifier

| | |
|-------------------------|--|
| <i>Description</i> | The user registers a person with an invalid identifier. |
| <i>Input</i> | SSIN: 56000308818 |
| <i>Expected outputs</i> | <p>The service returns a business error with the status: <i>Invalid input</i>.</p> <pre> <SOAP-ENV:Envelope xmlns:SOAP- ENV="http://schemas.xmlsoap.org/soap/envelope/"> <SOAP-ENV:Header/> <SOAP-ENV:Body> <ns3:AddInscriptionResponse Id="Id- ba4d895ffa6aca00180b4e9c" InResponseTo="id1" IssueInstant="2020-10- 16T09:37:31.760+02:00" xmlns:ns2="urn:be:fgov:health:commons:core:v2" xmlns :ns3="urn:be:fgov:health:rn:inscriptionservice:protocol:v1" xmlns:ns4="urn: be:fgov:health:rn:registries:commons:v1" xmlns:ns5="urn:be:fgov:health:rn: </pre> |



```

commons:business:v1" xmlns:ns7="urn:be:fgov:ehhealth:errors:soa:v1" xmlns:ns8
="urn:be:fgov:ehhealth:errors:service:v1">
  <ns2:Status>
    <ns2:StatusCode Value="urn:be:fgov:ehhealth:2.0:status:Requester"
  >
    <ns2:StatusCode Value="urn:be:fgov:ehhealth:2.0:status:Invalid
Input"/>
  </ns2:StatusCode>
  <ns2:StatusMessage>The Ssin is malformed</ns2:StatusMessage>
</ns2:Status>
</ns3:AddInscriptionResponse>
</SOAP-ENV:Body>
</SOAP-ENV:Envelope>

```

12.6 Remove a registered person

| | |
|-------------------------|--|
| <i>Description</i> | The user removes a registered person Remark: Execute the test case 12.1 before executing this one. |
| <i>Input</i> | SSIN: 81490230530 |
| <i>Expected outputs</i> | <p>The service returns success response.</p> <pre> <SOAP-ENV:Envelope xmlns:SOAP- ENV="http://schemas.xmlsoap.org/soap/envelope/"> <SOAP-ENV:Header/> <SOAP-ENV:Body> <ns3:AddInscriptionResponse Id="Id- 6c4e895fb56c5be00c7bb96d" InResponseTo="id1" IssueInstant="2020-10- 16T09:40:30.774+02:00" xmlns:ns2="urn:be:fgov:ehhealth:commons:core:v2" xmlns :ns3="urn:be:fgov:ehhealth:rn:inscriptionservice:protocol:v1" xmlns:ns4="urn: be:fgov:ehhealth:rn:registries:commons:v1" xmlns:ns5="urn:be:fgov:ehhealth:rn: commons:business:v1" xmlns:ns7="urn:be:fgov:ehhealth:errors:soa:v1" xmlns:ns8 ="urn:be:fgov:ehhealth:errors:service:v1"> <ns2:Status> <ns2:StatusCode Value="urn:be:fgov:ehhealth:2.0:status:Success"/> </ns2:Status> <ns3:Ssin Replacing="false">81490230530</ns3:Ssin> </ns3:AddInscriptionResponse> </SOAP-ENV:Body> </SOAP-ENV:Envelope> </pre> |

12.7 Remove a NOT registered person

| | |
|--------------------|--|
| <i>Description</i> | The user removes a NOT registered person. Remark: Execute the test case 12.6 before executing this one. |
| <i>Input</i> | SSIN: 81490230530 |



Expected outputs

The service returns a business error with the status: *Invalid Input*.

```
<SOAP-ENV:Envelope xmlns:SOAP-ENV="http://schemas.xmlsoap.org/soap/envelope/">
  <SOAP-ENV:Header/>
  <SOAP-ENV:Body>
    <ns3:RemoveInscriptionResponse Id="Id-fa50895f9072c73259a8982f" InResponseTo="id1" IssueInstant="2020-10-16T09:51:24.507+02:00" xmlns:ns2="urn:be:fgov:health:commons:core:v2" xmlns:ns3="urn:be:fgov:health:rn:inscriptionservice:protocol:v1" xmlns:ns4="urn:be:fgov:health:rn:registries:commons:v1" xmlns:ns5="urn:be:fgov:health:rn:commons:business:v1" xmlns:ns7="urn:be:fgov:health:errors:soa:v1" xmlns:ns8="urn:be:fgov:health:errors:service:v1">
      <ns2:Status>
        <ns2:StatusCode Value="urn:be:fgov:health:2.0:status:Requester" />
      </ns2:Status>
      <ns2:StatusMessage>No inscription exists</ns2:StatusMessage>
    </ns3:RemoveInscriptionResponse>
  </SOAP-ENV:Body>
</SOAP-ENV:Envelope>
```

