



**WalCareNet - MemberData  
Cookbook  
v1.0**

This document is provided to you free, of charge, by the

**eHealth platform**

**Willebroekkaai 38 – 1000 Brussel  
38, Quai de Willebroek – 1000 Bruxelles**

Anyone is free to distribute this document, referring to the URL source.

# Table of contents

|   |           |
|---|-----------|
| <b>Table of contents</b> .....  | <b>2</b>  |
| <b>1. Document management</b> .....                                   | <b>4</b>  |
| 1.1 Document history.....   | 4         |
| <b>2. Introduction</b> .....  | <b>5</b>  |
| 2.1 Goal of the service .....   | 5         |
| 2.2 Goal of the document .....  | 5         |
| 2.3 eHealth document references .....                                 | 5         |
| 2.4 External document references.....                                 | 6         |
| <b>3. Business and privacy requirements</b> .....                     | <b>7</b>  |
| 3.1 Helpdesk eHealth platform .....                                   | 7         |
| 3.1.1 Certificates.....   | 7         |
| 3.1.2 For issues in production .....                                  | 7         |
| 3.1.3 For issues in acceptance .....                                  | 7         |
| 3.1.4 For business issues .....                                       | 7         |
| 3.2 Status .....  | 7         |
| 3.3 Support desks: eHealth platform resp. CIN/NIC contact points..... | 7         |
| 3.3.1 MemberData business support .....                               | 7         |
| 3.3.2 MyCareNet Helpdesk:.....  | 7         |
| 3.3.3 Technical contact center MyCareNet: .....                       | 8         |
| <b>4. Global overview</b> .....                                       | <b>9</b>  |
| <b>5. Step-by-step</b> .....  | <b>10</b> |
| 5.1 Technical requirements.....                                       | 10        |
| 5.1.1 Use of the eHealth SSO solution.....                            | 11        |
| 5.1.2 Encryption.....   | 11        |
| 5.1.3 Security policies to apply .....                                | 11        |
| 5.2 Web service.....  | 11        |
| 5.2.1 Method MemberDataConsultation .....                             | 12        |
| 5.2.2 Used Types.....   | 19        |
| <b>6. Risks and Security</b> .....                                    | <b>20</b> |
| 6.1 Business security .....   | 20        |
| 6.1.1 Web service .....   | 20        |
| 6.1.2 The use of username, password and token.....                    | 20        |
| <b>7. Test and release procedure</b> .....                            | <b>21</b> |
| 7.1 Procedure.....  | 21        |
| 7.1.1 Initiation .....  | 21        |
| 7.1.2 Development and test procedure .....                            | 21        |
| 7.1.3 Release procedure.....  | 21        |
| 7.1.4 Operational follow-up .....                                     | 21        |
| 7.2 Test cases .....  | 21        |



**8. Error and failure messages..... 22**

To the attention of: "IT expert" willing to integrate this web service.



# 1. Document management

## 1.1 Document history

| Version | Date       | Author           | Description of changes / remarks |
|---------|------------|------------------|----------------------------------|
| 1.0     | 29/03/2024 | eHealth platform | First version                    |

## 2. Introduction

### 2.1 Goal of the service

WalCareNet MemberData webservice (WS) allows the care providers to consult the information (insurability and derived rights) of the patient to carry out an invoice or to deliver services/products in a correct way. The care provider needs to request a SAML token from the eHealth Secure Token Service (STS) prior to calling the MemberData service.

### 2.2 Goal of the document

This document is not a development or a programming guide for internal applications. Instead, it provides functional and technical information and allows an organization to integrate and use the eHealth service.

However, in order to interact in a smooth, homogeneous and risk controlled way with a maximum of partners, eHealth partners must commit to comply with the requirements of specifications, data format and release processes described in this document.

Technical and business requirements must be met in order to allow the integration and validation of the eHealth service in the client application.

Detailed description of the functionality of the service, the semantics of the particular elements and other general information about the service is out of the scope of this document. This kind of information can be found in the documentation provided by MyCareNet on their Sharepoint.

### 2.3 eHealth document references

All the document references can be found on the eHealth portal<sup>1</sup>. These versions or any following versions can be used for the eHealth service.

| ID | Title                                    | Version | Date       | Author           |
|----|--|---------|------------|------------------|
| 1  | Glossary.pdf                             | 1.0     | 01/01/2010 | eHealth platform |
| 2  | Cookbook Secure Token Service – WS Trust | 1.1     | 12/01/2024 | eHealth platform |
| 3  | WalCareNet MemberData SSO                | 1.0     | 24/01/2024 | eHealth platform |
| 4  | End-to-End Encryption<br>Known recipient | 2.9     | 18/07/2022 | eHealth platform |

---

<sup>1</sup> <https://ehealth.fgov.be/ehealthplatform>

## 2.4 External document references

All the WalCareNet documentation can be found within their Sharepoint<sup>2</sup>. The documentation referenced in this section may evolve in time.

If some external documentation has been modified, please notify the eHealth service management<sup>3</sup> who manages the maintenance of this document.

| ID  | Title   | Version | Last modification date | Author |
|-----|---|---------|------------------------|--------|
| 1.  | Web Service Security – SAML Token profile 1.1<br><i><a href="http://www.oasis-open.org/committees/download.php/16768/wssv1.1-spec-os-SAMLSecurityProfile.pdf">http://www.oasis-open.org/committees/download.php/16768/wssv1.1-spec-os-SAMLSecurityProfile.pdf</a></i> | NA      | 01/02/2006             | OASIS  |
| 2.  | GenericSync Error codes   | NA      | 28/02/2023             | CIN    |
| 3.  | ImplementationGuide_For_CareProvider  | NA      | 28/02/2023             | CIN    |
| 4.  | CIN Messages definition Member Data - Walcarenet  | NA      | 28/02/2023             | CIN    |
| 5.  | MyCareNet Authentication Catalogue  | NA      | 28/02/2023             | CIN    |
| 6.  | NIPPIN GenSync V3 (ESB 2 NIPPIN)  | NA      | 28/02/2023             | CIN    |
| 7.  | Service_Catalogue_iSocial_Commons   | NA      | 28/02/2023             | CIN    |
| 8.  | Service_Catalogue_iSocial_GenSync   | NA      | 28/02/2023             | CIN    |
| 9.  | xsd-encryption  | NA      | 28/02/2023             | CIN    |
| 10. | BE-KERR-MEMD-ALL Error Messages   | NA      | 28/02/2023             | CIN    |
| 11. | BE-MBSE-MEMD-ALL Member Data - Matrix by sector Wallonie MDA R1 V3.3  | NA      | 15/03/2023             | CIN    |
| 12. | WalCareNet - Memberdata - extensions  | NA      | 28/02/2023             | CIN    |

---

<sup>2</sup> In order to have access to the Sharepoint, you need to create an account which can be requested at : <https://fra.mycarenet.be/mycarenet/utilisateurs-de-mycarenet> or <https://ned.mycarenet.be/algemene-beschrijving/gebruikers>

<sup>3</sup> [ehealth\\_service\\_management@ehealth.fgov.be](mailto:ehealth_service_management@ehealth.fgov.be)

## 3. Business and privacy requirements

### 3.1 Helpdesk eHealth platform

#### 3.1.1 Certificates

In order to access the secured eHealth platform environment you have to obtain an eHealth platform certificate, used to identify the initiator of the request. In case you do not have one, please consult the chapter about the eHealth Certificates on the portal of the eHealth platform

- <https://www.ehealth.fgov.be/ehealthplatform/nl/ehealth-certificaten>
- <https://www.ehealth.fgov.be/ehealthplatform/fr/certificats-ehealth>

For technical issues regarding eHealth platform certificates

- Acceptance: [acceptance-certificates@ehealth.fgov.be](mailto:acceptance-certificates@ehealth.fgov.be)
- Production: [support@ehealth.fgov.be](mailto:support@ehealth.fgov.be)

#### 3.1.2 For issues in production

eHealth platform contact centre:

- Phone: 02 788 51 55 (on working days from 7 am till 8 pm)
- Mail: [support@ehealth.fgov.be](mailto:support@ehealth.fgov.be)
- Contact Form :
  - <https://www.ehealth.fgov.be/ehealthplatform/nl/contact> (Dutch)
  - <https://www.ehealth.fgov.be/ehealthplatform/fr/contact> (French)

#### 3.1.3 For issues in acceptance

[Integration-support@ehealth.fgov.be](mailto:Integration-support@ehealth.fgov.be)

#### 3.1.4 For business issues

- regarding an existing project: the project manager in charge of the application or service
- regarding a new project or other business issues: [info@ehealth.fgov.be](mailto:info@ehealth.fgov.be)

### 3.2 Status

The website <https://status.ehealth.fgov.be> is the monitoring and information tool for the ICT functioning of the eHealth services that are partners of the Belgian eHealth system.

### 3.3 Support desks: eHealth platform resp. CIN/NIC contact points

#### 3.3.1 MemberData business support

For business questions related to MemberData: MyCareNet Helpdesk (first line support)

#### 3.3.2 MyCareNet Helpdesk:

Telephone: 02/891 72 56

Mail: [support@intermut.be](mailto:support@intermut.be)



### 3.3.3 Technical contact center MyCareNet:

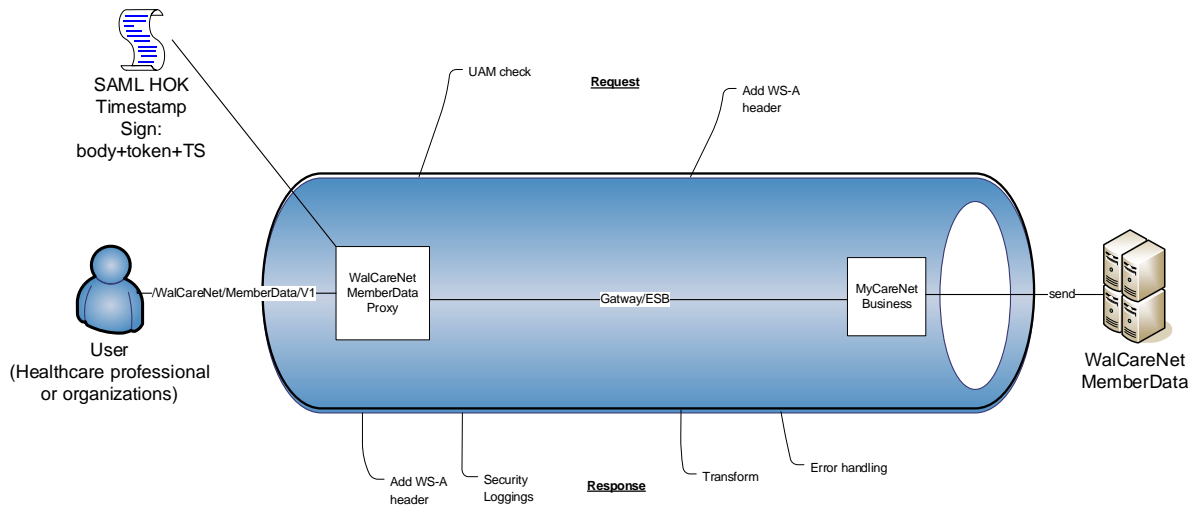
Telephone: 02/431 47 71

Mail: [ServiceDesk@MyCareNet.be](mailto:ServiceDesk@MyCareNet.be)





## 4. Global overview



The MemberData service (from WalCareNet, in this case) is secured with the SAML HOK policy. Therefore, prior to calling the services, a SAML token must be obtained at the eHealth STS. The obtained token must be then included in the header of the request message, where the timestamp and the body must be signed with the certificate as used in the HOK profile of the SAML token (more detailed technical description can be found further in the chapter 5 of this cookbook). The body contains the MemberData request. The eHealth Service Bus (ESB) verifies the security (authentication, authorization, etc.) and forwards the request to WalCareNet. Then, the service returns the response delivered by the WalCareNet backend.

## 5. Step-by-step

### 5.1 Technical requirements

In order to be able to test the WalCareNet MemberData service, you need to take the following steps:

1. **Create a test case:** If the testing is done for a real care provider, the real NIHI number of the care provider can be used. Otherwise, you will receive a test NIHI number from the eHealth development team (you must indicate the service called and the kind of profile needed). You always need to request the configuration of the test cases at eHealth ([info@ehealth.fgov.be](mailto:info@ehealth.fgov.be)).
2. **Request an eHealth test certificate:** a test certificate must be requested at eHealth.  
(<https://www.ehealth.fgov.be/ehealthplatform/fr/data/file/view/fe321dd6989a5b71f05f0d11fd92fe5db21bcfcc?name=Procuration%20Form%20eHealthTestCert.pdf> ).
3. **Obtain the SAML token from the STS:** the eHealth test certificate obtained in the previous step is used for identification at the STS and as the Holder-Of-Key (HOK) certificate.
4. **Call the MemberData web services.**

The rules to access the MemberData are the same in acceptance as in production.

Access rules:

- authentication with a care providers certificate (see § 3.1 for the information on the certificates, and further in this section for the information about the SAML token).
- authentication with the certificate of a mandate holder (see § 3.1 for the information on the certificates, and further in this section for the information about the SAML token).

In order to implement a WS call protected with a SAML token you can reuse the implementation as provided in the "eHealth technical connector". Nevertheless, eHealth implementations use standards and any other compatible technology (WSstack for the client implementation) can be used instead.

- <https://www.ehealth.fgov.be/ehealthplatform/nl/service-ehealth-platform-services-connectors>
- <https://www.ehealth.fgov.be/ehealthplatform/fr/service-ehealth-platform-services-connectors>

Alternatively, you can write your own implementation. The usage of the STS and the structure of the exchanged xml-messages are described in the eHealth STS – WS Trust cookbook.

### 5.1.1 Use of the eHealth SSO solution

This section specifies how to call the STS in order to have access to the WS. You must precise several attributes in the request. The details on the identification attributes and the certification attributes can be found in the separate document WalCaret MemberData SSO.

To access the WalCaret MemberData WS, the response token must contain “true” for all of the ‘boolean’ certification attributes and a non-empty value for other certification attributes.

If you obtain “false” or empty values, contact the eHealth platform to verify that they correctly configured the requested test case.

### 5.1.2 Encryption

All the information about the use of the encryption libraries and the call to the ETK (eHealth Token Key) depot are described in the End-To-End Encryption (ETEE) cookbooks on the eHealth portal.

To encrypt the request parts, you have to call the GetEtk operation to pick up the right ETK from the eHealth ETK depot. By example, the table below provides you the identifiers to use in the GetEtkRequest.

| Environment                  | Type | Value      | Application ID |
|------------------------------|------|------------|----------------|
| Integration Test Environment | CBE  | 0675597179 | WALCARENET     |
| Acceptance Environment       | CBE  | 0675597179 | WALCARENET     |
| Production Environment       | CBE  | 0675597179 | WALCARENET     |

### 5.1.3 Security policies to apply

We expect that you use SSL one way for the transport layer.

To call the MemberData WS:

- Add the business message to the soap body
- Add to the SOAP header the following elements:
  - **SAML Token:** The SAML assertion received from the eHealth STS. This assertion needs to be forwarded exactly as received in order to not to break the signature of the eHealth STS. The token needs to be added accordingly to the specifications of the OASIS SAML Token Profile (HOK).
  - **Timestamp.**
  - A **signature** that has been placed on the SOAPBody and the timestamp with the certificate of which the public key is mentioned in the SAML Assertion.
- The signature element (mentioned above) needs to contain:
  - SignedInfo with References to the SOAPBody and the Timestamp.
  - KeyInfo with a SecurityTokenReference pointing to the SAML Assertion.

See also the WSSP in the WSDL<sup>4</sup> (also included in the documentation).

## 5.2 Web service

The MemberData WS has one operation available:

- MemberDataConsultation

The MemberData WS has the following endpoints:

- Acceptance environment: <https://services-acpt.ehealth.fgov.be/WalCareNet/MemberData/v1>

---

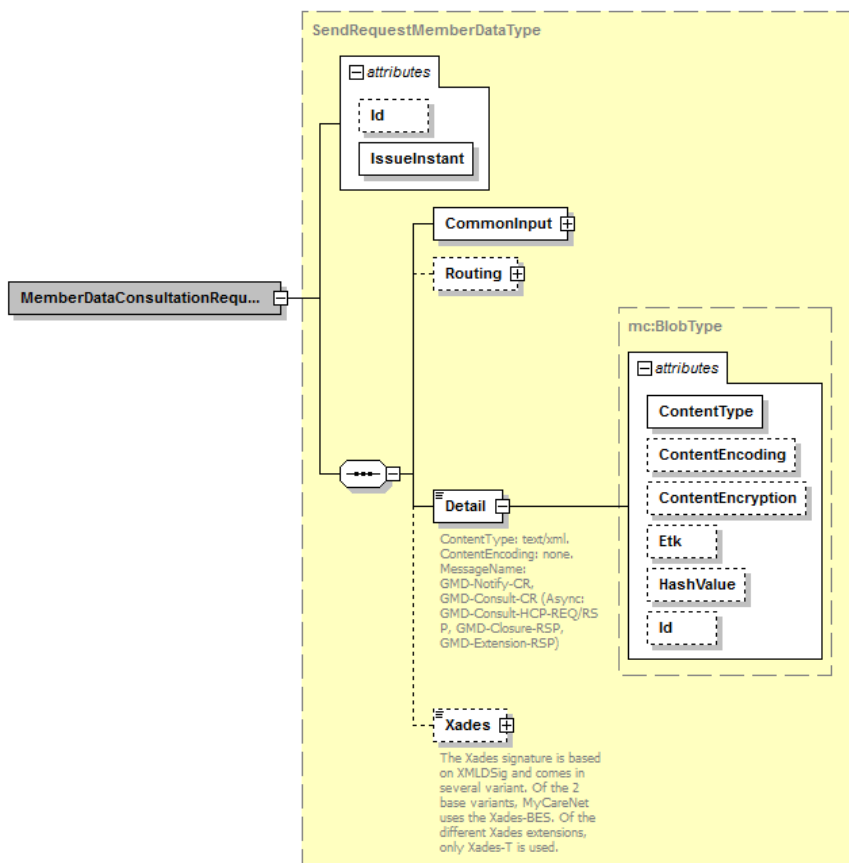
<sup>4</sup> WSDL's can be found in the eHealth Service Registry: <https://www.ehealth.fgov.be/ehealthplatform/nl/service-api-catalog>

- Production environment: <https://services.ehealth.fgov.be/WalCareNet/MemberData/v1>

The remainder of this section describes the structure of the request and the response messages. Section 5.2.1 describes the request and response messages for the *memberDataConsultation* operation, and section 5.2.2 describes the common element types used in the structures of the request and response types. For more details on the specific elements and the concepts behind them, see the documentation as provided by the CIN/NIC on their Sharepoint.

## 5.2.1 Method MemberDataConsultation

### 5.2.1.1 Input arguments in MemberDataConsultationRequest



| Field name  | Description   |
|-------------|---|
| CommonInput | See section 5.2.2.1 : CommonInputType   |
| Routing     | This element is not mandatory in this service. If it is present, it will be ignored by the backend. |

|        |   |
|--------|---|
| Detail | <p>Detail of the request. The detail must be encrypted.</p> <p>Detail attribute values :</p> <p>@ContentType: "text/xml"</p> <p>@ContentEncoding: "none"</p> <p>@ContentEncryption: attribute used to indicate that the content of the blob has been encrypted. The value must be "encryptedForKnownBED": the sender encrypted the content of the body with the public key of the CIN/NIC..</p> <p>@Etk the encryption token that has been used for the encryption of the body. Mentioning this information helps the recipient to identify the private key to be used for decryption. When not provided, the recipient may choose to reject the message or try to decrypt using the several existing private keys.</p> <p>@HashValue pre-calculated hash of the uncompressed and decoded content. Is always provided to the care provider.</p> <p>@Id: The ID of the blob for usage in the XAdES signature. It is an "NCName" instead of an "ID" in order to be able to have different blobs with the same (fixed) id without causing an XSD validation.</p> <p>Note that the attribute "MessageName" in the Detail element is not present in the interface as provided by the eHealth platform. This attribute value is then filled out by the eHealth platform according to the called operation (for the MemberData service it is "MDA").</p> <p>The content of the encrypted message should respect some standard format to allow additional information exchange :</p> <ul style="list-style-type: none"> <li>- The identity of the Key to be used to encrypt the response.</li> <li>- The XAdES as probative force of the message.</li> </ul> <p>See the 'Service_Catalogue_iSocial_GenSync' provided by the CIN/NIC for more details about the structure "EncryptedKnownContent".</p> |
| Xades  | <p>For MemberData, the Xades must be inserted in the "EncryptedKnownContent" structure.</p> <p>See the 'Service_Catalogue_iSocial_GenSync' provided by the CIN/NIC for more details about the structure "EncryptedKnownContent".</p>  |

### 5.2.1.2 Request example

Detail element (without encryption) based on examples provided by CIN/NIC :

```
<?xml version="1.0" encoding="UTF-8"?>
<samlp:AttributeQuery Version="2.0" IssueInstant="2017-07-11T12:00:00" ID="idvalue0" xmlns:samlp="urn:oasis:names:tc:SAML:2.0:protocol"
xmlns:saml="urn:oasis:names:tc:SAML:2.0:assertion" xmlns:p="urn:be:cin:mycarenet:esb:common:v2"
xmlns:xsi="http://www.w3.org/2001/XMLSchema-instance" xmlns:ext="urn:be:cin:nippin:memberdata:saml:extension" xsi:schemaLocation="
urn:oasis:names:tc:SAML:2.0:protocol saml-schema-protocol-2.0.xsd
urn:be:cin:nippin:memberdata:saml:extension Extensions.xsd
">
  <saml:Issuer Format="urn:be:cin:nippin:nihi11">10041676003</saml:Issuer>
  <samlp:Extensions xsi:type="ext:ExtensionsType">
    <ext:Facet id="urn:be:cin:nippin:insurability">
      <Dimension id="requestType">information</Dimension>
      <Dimension id="contactType">hospitalized</Dimension>
    </ext:Facet>
    <ext:Facet id="urn:be:cin:nippin:carePath">
      <Dimension id="carePathType">diabetes</Dimension>
    </ext:Facet>
    <ext:Facet id="urn:be:cin:nippin:chronicCondition">
    </ext:Facet>
    <ext:Facet id="urn:be:cin:nippin:referencePharmacy">
    </ext:Facet>
  </samlp:Extensions>
  <saml:Subject>
```

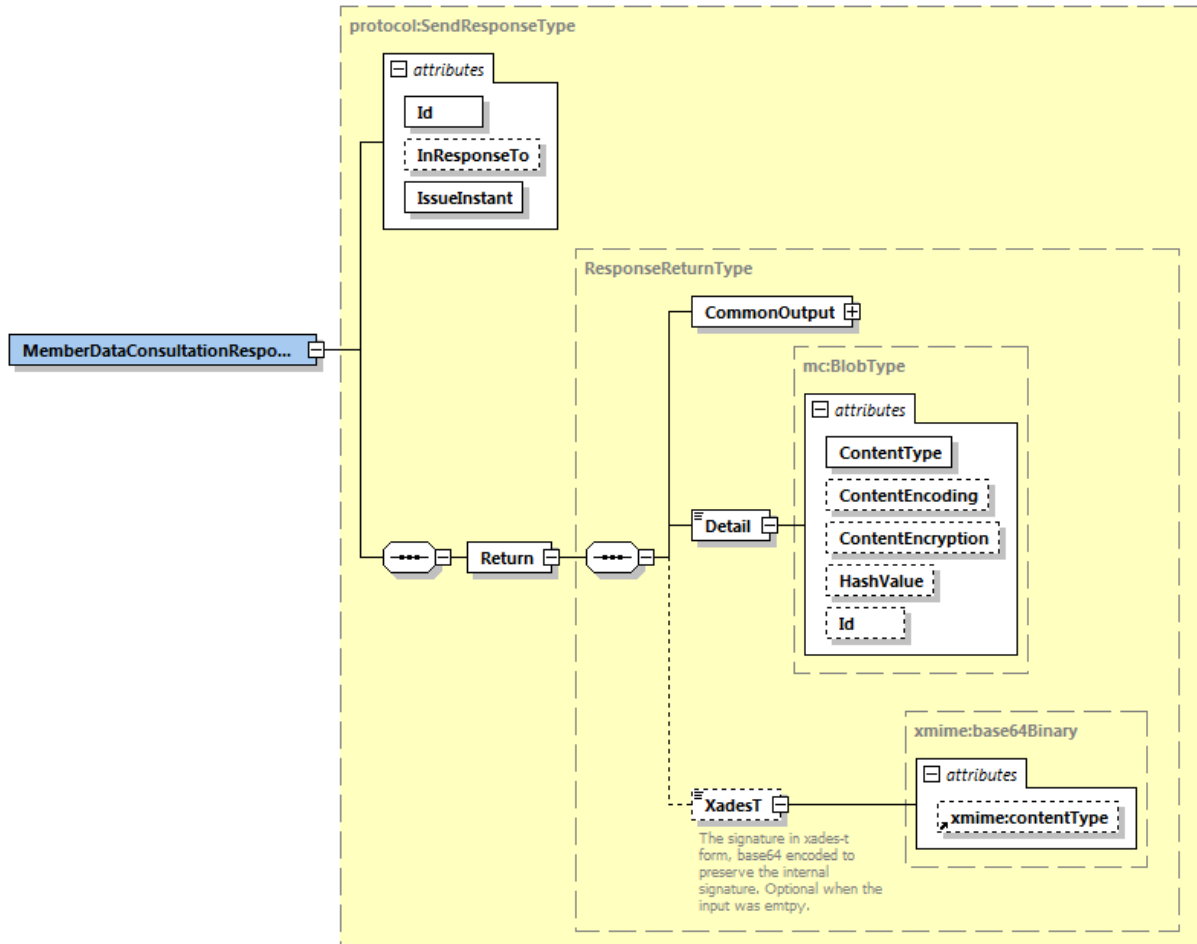


```

<saml:NameID Format="urn:be:cin:nippin:careReceiver:registrationNumber@mut">790105092m65@100</saml:NameID>
<saml:SubjectConfirmation Method="urn:be:cin:nippin:memberIdentification">
  <saml:SubjectConfirmationData NotBefore="2017-07-11T00:00:00+02:00" NotOnOrAfter="2017-07-
12T00:00:00+02:00"/>
</saml:SubjectConfirmation>
</saml:Subject>
</samlp:AttributeQuery>

```

### 5.2.1.3 Output arguments in MemberDataConsultationResponse



| Field name | Description   |
|------------|---|
| "Response" | @Id : Unique Id for tracing<br>@InresponseTo : 'Id' attribute of the request if available<br>@IssueInstant : Generation response moment   |
| Return     | See the documentation provided by the CIN/NIC for more details :<br>- 'Service_Catalogue_iSocial_GenSync'<br><br>NB: If the attribute @ContentEncryption is filled, it may only have these values : <ul style="list-style-type: none"> <li>- encryptedForKnownRecipient</li> <li>- encryptedForKnownBED</li> <li>- toEncryptByBED</li> <li>- toEncryptByIM</li> </ul> |

### 5.2.1.4 Response example

Return Detail element (without encryption) based on examples provided by CIN/NIC:

```
<?xml version="1.0" encoding="UTF-8"?>
<samlp:Response Version="2.0" IssueInstant="2017-07-11T12:00:01Z" ID="idvalue1" InResponseTo="idvalue0"
xmlns:common="urn:be:cin:mycarenet:esb:common:v2" xmlns:xsi="http://www.w3.org/2001/XMLSchema-instance"
xmlns:xenc="http://www.w3.org/2001/04/xmlenc#" xmlns:samlp="urn:oasis:names:tc:SAML:2.0:protocol"
xmlns:saml="urn:oasis:names:tc:SAML:2.0:assertion" xmlns:ds="http://www.w3.org/2000/09/xmldsig#"
xmlns:xs="http://www.w3.org/2001/XMLSchema" xmlns:ext="urn:be:cin:nippin:memberdata:saml:extension" xsi:schemaLocation="
urn:oasis:names:tc:SAML:2.0:protocol saml-schema-protocol-2.0.xsd
urn:be:cin:nippin:memberdata:saml:extension Extensions.xsd"
">
  <saml:Issuer>urn:be:cin:io:100</saml:Issuer>
  <samlp>Status>
    <samlp:StatusCode Value="urn:oasis:names:tc:2.0:status:Success"/>
  </samlp>Status>
  <saml:Assertion Version="2.0" IssueInstant="2017-07-11T12:00:01Z" ID="_a75adf55-01d7-40cc-929f-dbd8372ebdfc1">
    <saml:Issuer>urn:be:cin:io:100</saml:Issuer>
    <saml:Subject>
      <saml:NameID
Format="urn:be:cin:nippin:careReceiver:registrationNumber@mut">790105092m65@100</saml:NameID>
      <saml:SubjectConfirmation Method="urn:be:cin:nippin:memberIdentification">
        <saml:SubjectConfirmationData NotBefore="2017-07-11T00:00:02:00" NotOnOrAfter="2017-07-
12T00:00:02:00"/>
      </saml:SubjectConfirmation>
    </saml:Subject>
    <saml:Advice xsi:type="ext:AdviceType">
      <ext:AssertionType>urn:be:cin:nippin:insurability:patientData</ext:AssertionType>
      <ext:Facet id="urn:be:cin:nippin:insurability">
        <Dimension id="requestType">information</Dimension>
        <Dimension id="contactType">hospitalized</Dimension>
      </ext:Facet>
    </saml:Advice>
    <saml:AttributeStatement>
      <saml:Attribute Name="urn:be:fgov:person:ssin">
        <saml:AttributeValue xsi:type="xs:string">79010501645</saml:AttributeValue>
      </saml:Attribute>
      <saml:Attribute Name="urn:be:cin:nippin:careReceiver:name">
        <saml:AttributeValue xsi:type="xs:string">Vieilvoye</saml:AttributeValue>
      </saml:Attribute>
      <saml:Attribute Name="urn:be:cin:nippin:careReceiver:firstName">
        <saml:AttributeValue xsi:type="xs:string">Anne</saml:AttributeValue>
      </saml:Attribute>
      <saml:Attribute Name="urn:be:cin:nippin:careReceiver:birthDate">
        <saml:AttributeValue xsi:type="xs:date">1979-01-05</saml:AttributeValue>
      </saml:Attribute>
      <saml:Attribute Name="urn:be:cin:nippin:careReceiver:gender">
        <saml:AttributeValue xsi:type="xs:string">female</saml:AttributeValue>
      </saml:Attribute>
    </saml:AttributeStatement>
  </saml:Assertion>
  <saml:Assertion Version="2.0" IssueInstant="2017-07-11T12:00:01Z" ID="_a75adf55-01d7-40cc-929f-dbd8372ebdfc2">
    <saml:Issuer>urn:be:cin:io:100</saml:Issuer>
    <saml:Subject>
      <saml:NameID
Format="urn:be:cin:nippin:careReceiver:registrationNumber@mut">790105092m65@100</saml:NameID>
      <saml:SubjectConfirmation Method="urn:be:cin:nippin:memberIdentification">
        <saml:SubjectConfirmationData NotBefore="2017-07-11T00:00:02:00" NotOnOrAfter="2017-07-
12T00:00:02:00"/>
      </saml:SubjectConfirmation>
    </saml:Subject>
    <saml:Advice xsi:type="ext:AdviceType">
      <ext:AssertionType>urn:be:cin:nippin:insurability:period</ext:AssertionType>
      <ext:Facet id="urn:be:cin:nippin:insurability">
        <Dimension id="requestType">information</Dimension>
        <Dimension id="contactType">hospitalized</Dimension>
      </ext:Facet>
    </saml:Advice>
    <saml:AttributeStatement>
```



```

        <saml:Attribute Name="urn:be:cin:nippin:careReceiver:registrationNumber">
          <saml:AttributeValue xsi:type="xs:string">790105092m65</saml:AttributeValue>
        </saml:Attribute>
        <saml:Attribute Name="urn:be:cin:nippin:careReceiver:mutuality">
          <saml:AttributeValue xsi:type="xs:string">130</saml:AttributeValue>
        </saml:Attribute>
        <saml:Attribute Name="urn:be:cin:nippin:cb1">
          <saml:AttributeValue xsi:type="xs:string">110</saml:AttributeValue>
        </saml:Attribute>
        <saml:Attribute Name="urn:be:cin:nippin:cb2">
          <saml:AttributeValue xsi:type="xs:string">110</saml:AttributeValue>
        </saml:Attribute>
        <saml:Attribute Name="urn:be:cin:nippin:communicationDate">
          <saml:AttributeValue xsi:type="xs:date">2017-07-11</saml:AttributeValue>
        </saml:Attribute>
      </saml:AttributeStatement>
    </saml:Assertion>
    <saml:Assertion Version="2.0" IssueInstant="2017-07-11T12:00:01Z" ID="_a75adf55-01d7-40cc-929f-dbd8372ebdfc3">
      <saml:Issuer>urn:be:cin:io:100</saml:Issuer>
      <saml:Subject>
        <saml:NameID
Format="urn:be:cin:nippin:careReceiver:registrationNumber@mut">790105092m65@100</saml:NameID>
        <saml:SubjectConfirmation Method="urn:be:cin:nippin:memberIdentification">
          <saml:SubjectConfirmationData NotBefore="2017-07-11T00:00:00+02:00" NotOnOrAfter="2017-07-
12T00:00:00+02:00"/>
        </saml:SubjectConfirmation>
      </saml:Subject>
      <saml:Advice xsi:type="ext:AdviceType">
        <ext:AssertionType>urn:be:cin:nippin:insurability:payment</ext:AssertionType>
        <ext:Facet id="urn:be:cin:nippin:insurability">
          <Dimension id="requestType">information</Dimension>
          <Dimension id="contactType">hospitalized</Dimension>
        </ext:Facet>
      </saml:Advice>
      <saml:AttributeStatement>
        <saml:Attribute Name="urn:be:cin:nippin:payment:byIO">
          <saml:AttributeValue xsi:type="xs:boolean">true</saml:AttributeValue>
        </saml:Attribute>
      </saml:AttributeStatement>
    </saml:Assertion>
    <saml:Assertion Version="2.0" IssueInstant="2017-07-11T12:00:01Z" ID="_a75adf55-01d7-40cc-929f-dbd8372ebdfc5">
      <saml:Issuer>urn:be:cin:io:100</saml:Issuer>
      <saml:Subject>
        <saml:NameID
Format="urn:be:cin:nippin:careReceiver:registrationNumber@mut">790105092m65@100</saml:NameID>
        <saml:SubjectConfirmation Method="urn:be:cin:nippin:memberIdentification">
          <saml:SubjectConfirmationData NotBefore="2017-07-11T00:00:00+02:00" NotOnOrAfter="2017-07-
12T00:00:00+02:00"/>
        </saml:SubjectConfirmation>
      </saml:Subject>
      <saml:Advice xsi:type="ext:AdviceType">
        <ext:AssertionType>urn:be:cin:nippin:medicalHouse</ext:AssertionType>
        <ext:Facet id="urn:be:cin:nippin:insurability">
          <Dimension id="requestType">information</Dimension>
          <Dimension id="contactType">hospitalized</Dimension>
        </ext:Facet>
      </saml:Advice>
      <saml:AttributeStatement>
        <saml:Attribute Name="urn:be:cin:nippin:medicalHouse:type">
          <saml:AttributeValue xsi:type="xs:string">Medical</saml:AttributeValue>
        </saml:Attribute>
        <saml:Attribute Name="urn:be:cin:nippin:medicalHouse:start">
          <saml:AttributeValue xsi:type="xs:date">2016-11-01</saml:AttributeValue>
        </saml:Attribute>
        <saml:Attribute Name="urn:be:cin:nippin:medicalHouse:end">
          <saml:AttributeValue xsi:type="xs:date">2017-12-31</saml:AttributeValue>
        </saml:Attribute>
      </saml:AttributeStatement>
    </saml:Assertion>

```





```

    <saml:Assertion Version="2.0" IssueInstant="2017-07-11T12:00:01Z" ID="_a75adf55-01d7-40cc-929f-dbd8372ebdfc6">
      <saml:Issuer>urn:be:cin:io:100</saml:Issuer>
      <saml:Subject>
        <saml:NameID
Format="urn:be:cin:nippin:careReceiver:registrationNumber@mut">790105092m65@100</saml:NameID>
        <saml:SubjectConfirmation Method="urn:be:cin:nippin:memberIdentification">
          <saml:SubjectConfirmationData NotBefore="2017-07-11T00:00:00+02:00" NotOnOrAfter="2017-07-
12T00:00:00+02:00"/>
        </saml:SubjectConfirmation>
      </saml:Subject>
      <saml:Advice xsi:type="ext:AdviceType">
        <ext:AssertionType>urn:be:cin:nippin:hospitalisation</ext:AssertionType>
        <ext:Facet id="urn:be:cin:nippin:insurability">
          <Dimension id="requestType">information</Dimension>
          <Dimension id="contactType">hospitalized</Dimension>
        </ext:Facet>
      </saml:Advice>
      <saml:AttributeStatement>
        <saml:Attribute Name="urn:be:cin:nippin:hospitalisation:hospital:nihi11">
          <saml:AttributeValue xsi:type="xs:string">71007661000</saml:AttributeValue>
        </saml:Attribute>
        <saml:Attribute Name="urn:be:cin:nippin:hospitalisation:service">
          <saml:AttributeValue xsi:type="xs:string">38</saml:AttributeValue>
        </saml:Attribute>
        <saml:Attribute Name="urn:be:cin:nippin:hospitalisation:admissionDate">
          <saml:AttributeValue xsi:type="xs:date">2017-01-01</saml:AttributeValue>
        </saml:Attribute>
      </saml:AttributeStatement>
    </saml:Assertion>
    <saml:Assertion Version="2.0" IssueInstant="2017-07-11T12:00:01Z" ID="_a75adf55-01d7-40cc-929f-dbd8372ebdfc7">
      <saml:Issuer>urn:be:cin:io:100</saml:Issuer>
      <saml:Subject>
        <saml:NameID
Format="urn:be:cin:nippin:careReceiver:registrationNumber@mut">790105092m65@100</saml:NameID>
        <saml:SubjectConfirmation Method="urn:be:cin:nippin:memberIdentification">
          <saml:SubjectConfirmationData NotBefore="2017-07-11T00:00:00+02:00" NotOnOrAfter="2017-07-
12T00:00:00+02:00"/>
        </saml:SubjectConfirmation>
      </saml:Subject>
      <saml:Advice xsi:type="ext:AdviceType">
        <ext:AssertionType>urn:be:cin:nippin:carePath</ext:AssertionType>
        <ext:Facet id="urn:be:cin:nippin:carePath">
          <Dimension id="carePathType">diabetes</Dimension>
        </ext:Facet>
      </saml:Advice>
      <saml:AttributeStatement>
        <saml:Attribute Name="urn:be:cin:nippin:carePath:type">
          <saml:AttributeValue xsi:type="xs:string">diabetes</saml:AttributeValue>
        </saml:Attribute>
        <saml:Attribute Name="urn:be:cin:nippin:carePath:physician:nihi11">
          <saml:AttributeValue xsi:type="xs:string">16567303004</saml:AttributeValue>
        </saml:Attribute>
        <saml:Attribute Name="urn:be:cin:nippin:carePath:specialist:nihi11">
          <saml:AttributeValue xsi:type="xs:string">17656275583</saml:AttributeValue>
        </saml:Attribute>
        <saml:Attribute Name="urn:be:cin:nippin:carePath:startRightDate">
          <saml:AttributeValue xsi:type="xs:date">2017-03-15</saml:AttributeValue>
        </saml:Attribute>
        <saml:Attribute Name="urn:be:cin:nippin:carePath:endContractDate">
          <saml:AttributeValue xsi:type="xs:date">2017-12-31</saml:AttributeValue>
        </saml:Attribute>
        <saml:Attribute Name="urn:be:cin:nippin:carePath:endRightDate">
          <saml:AttributeValue xsi:type="xs:date">2017-12-31</saml:AttributeValue>
        </saml:Attribute>
      </saml:AttributeStatement>
    </saml:Assertion>
    <saml:Assertion Version="2.0" IssueInstant="2017-07-11T12:00:01Z" ID="_a75adf55-01d7-40cb-929f-dbd8372ebdfc6">
      <saml:Issuer>urn:be:cin:io:100</saml:Issuer>
      <saml:Subject>

```



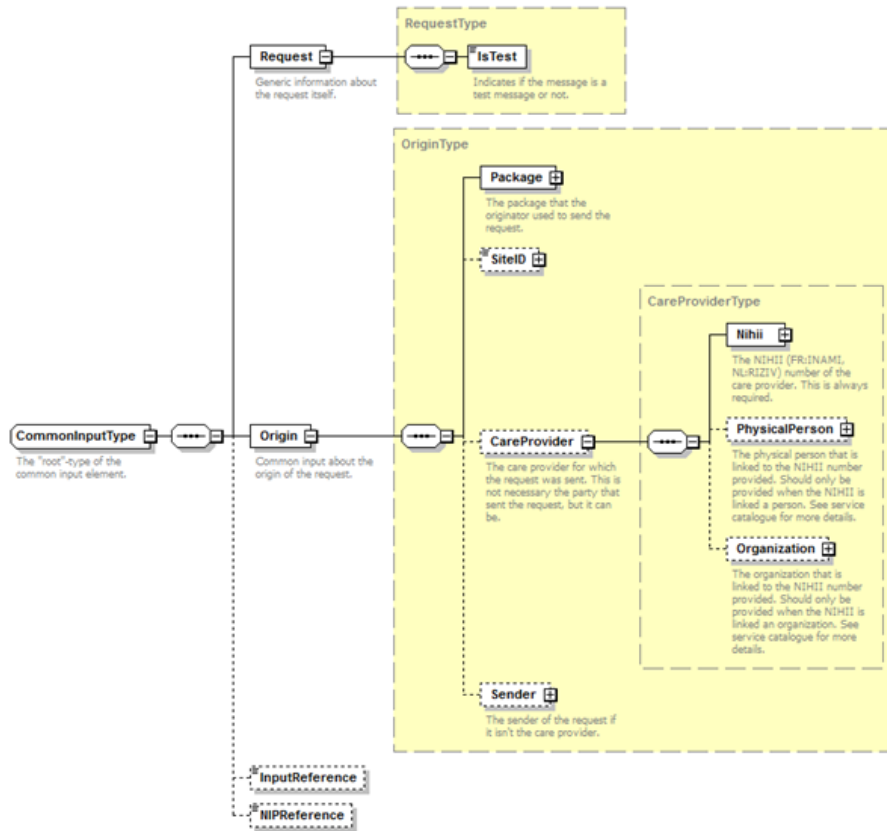
```

        <saml:NameID
Format="urn:be:cin:nippin:careReceiver:registrationNumber@mut">790105092m65@100</saml:NameID>
        <saml:SubjectConfirmation Method="urn:be:cin:nippin:memberIdentification">
            <saml:SubjectConfirmationData NotBefore="2017-07-11T00:00:00+02:00" NotOnOrAfter="2017-07-
12T00:00:00+02:00"/>
        </saml:SubjectConfirmation>
    </saml:Subject>
    <saml:Advice xsi:type="ext:AdviceType">
        <ext:AssertionType>urn:be:cin:nippin:chronicCondition</ext:AssertionType>
        <ext:Facet id="urn:be:cin:nippin:chronicCondition">
            </ext:Facet>
        </saml:Advice>
    <saml:AttributeStatement>
        <saml:Attribute Name="urn:be:cin:nippin:chronicCondition:year">
            <saml:AttributeValue xsi:type="xs:string">2017</saml:AttributeValue>
        </saml:Attribute>
    </saml:AttributeStatement>
</saml:Assertion>
<saml:Assertion Version="2.0" IssueInstant="2017-07-11T12:00:01Z" ID="_a75adf55-01d7-40bc-929f-dbd8372ebdfc6">
    <saml:Issuer>urn:be:cin:io:100</saml:Issuer>
    <saml:Subject>
        <saml:NameID
Format="urn:be:cin:nippin:careReceiver:registrationNumber@mut">790105092m65@100</saml:NameID>
        <saml:SubjectConfirmation Method="urn:be:cin:nippin:memberIdentification">
            <saml:SubjectConfirmationData NotBefore="2017-07-11T00:00:00+02:00" NotOnOrAfter="2017-07-
12T00:00:00+02:00"/>
        </saml:SubjectConfirmation>
    </saml:Subject>
    <saml:Advice xsi:type="ext:AdviceType">
        <ext:AssertionType>urn:be:cin:nippin:referencePharmacy</ext:AssertionType>
        <ext:Facet id="urn:be:cin:nippin:referencePharmacy">
            </ext:Facet>
        </saml:Advice>
    <saml:AttributeStatement>
        <saml:Attribute Name="urn:be:cin:nippin:referencePharmacy:pharmacy:nihi8">
            <saml:AttributeValue xsi:type="xs:string">66666417</saml:AttributeValue>
        </saml:Attribute>
        <saml:Attribute Name="urn:be:cin:nippin:referencePharmacy:startDate">
            <saml:AttributeValue xsi:type="xs:string">2017-03-15</saml:AttributeValue>
        </saml:Attribute>
    </saml:AttributeStatement>
</saml:Assertion>
</samlp:Response>

```

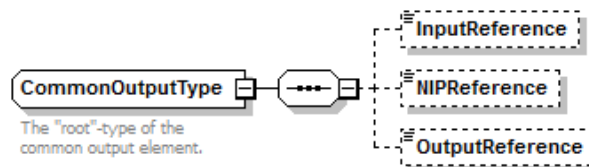
## 5.2.2 Used Types

### 5.2.2.1 CommonInputType



For the semantics of the particular elements and other information about the service, see the documentation [Service\\_Catalogue\\_iSocial\\_Commons](#) and [MyCareNet Authentication Catalogue](#) provided by the CIN/NIC.

### 5.2.2.2 CommonOutputType



For the semantics of the particular elements and other information about the service see the [Service\\_Catalogue\\_iSocial\\_Commons](#) provided by the CIN/NIC.

## 6. Risks and Security

### 6.1 Business security

In case the development adds an additional use case based on an existing integration, the eHealth platform has to be informed with a detailed estimate of the expected load, at least one month in advance. This will ensure an effective capacity management.

In case of technical issues on the web service, the partner may obtain support from the contact center that is responsible for this service.

In case the eHealth platform finds a bug or vulnerability in its software, the partner is advised to update his application with the newest version of the software within 10 business days.

In case the partner finds a bug or vulnerability in the software or WS that the eHealth platform delivered, he is obliged to contact and inform the eHealth platform immediately and he is not allowed to publish this bug or vulnerability in any case.

#### 6.1.1 Web service

WS security used in this manner is in accordance with the common standards. Your call will provide:

- SSL one way
- Time-to-live of the message: one minute. Note that the time-to-live is the time difference between the Created and Expires elements in the Timestamp and is not related to the timeout setting on the eHealth ESB, etc. This means that eHealth will process the message if it is received within the time-to-live value (there is also tolerance of 5 minutes to account for the clock skew), but the actual response time may be greater than one minute in some situations.
- Signature of the timestamp and body. This will allow eHealth to verify the integrity of the message and the identity of the message author.
- Encryption of the business part of the message with the WalCareNet ETK.

#### 6.1.2 The use of username, password and token

The username, password and token are strictly personal. Partners and clients are not allowed to transfer them. Every user takes care of his username, password and token and he is forced to confidentiality of it. Moreover, every user is responsible of every use including the use by a third party, until the inactivation.



# 7. Test and release procedure

## 7.1 Procedure

This chapter explains the procedures for testing and releasing an application in acceptance or production.

### 7.1.1 Initiation

If you intend to use the eHealth service in the acceptance environment, please contact [info@ehealth.fgov.be](mailto:info@ehealth.fgov.be). The Project department will provide you with the necessary information and mandatory documents.

### 7.1.2 Development and test procedure

You have to develop a client in order to connect to our WS. Most of the required integration info is published on the eHealth portal.

In some cases, the eHealth platform provides you with a mock-up service or test cases in order for you to test your client before releasing it in the acceptance environment.

### 7.1.3 Release procedure

When development tests are successful, you can request to access the eHealth acceptance environment.

From this moment, you can start integration and acceptance tests. The eHealth platform suggests testing during minimum one month.

After successful acceptance tests, the partner sends his test results and performance results with a sample of “eHealth request” and “eHealth answer” to the eHealth point of contact by email.

Then the eHealth platform and the partner agree on a release date. The eHealth platform prepares the connection to the production environment and provides the partner with the necessary information. During the release day, the partner provides feedback on the test and performance tests.

For further information and instructions, please contact: [integration-support@ehealth.fgov.be](mailto:integration-support@ehealth.fgov.be).

### 7.1.4 Operational follow-up

Once in production, the partner using the eHealth service for one of its applications will always test first in the acceptance environment before releasing any adaptations of its application in production. In addition, he will inform eHealth on the progress and test period.

## 7.2 Test cases

The eHealth platform recommends performing tests for the following case:

- MemberDataConsultation (contact NIC/CIN for test data of the patients)

In addition, the software providers should also run negative test cases.

## 8. Error and failure messages

There are different possible types of response:

- If there are no technical errors, responses as described in section 5 are returned.
- In the case of a technical error, a SOAP fault exception is returned (see table below).

If an error occurs, first please verify your request. Following table contains a list of common system error codes for the eHealth Service Bus.

For possible business errors, refer to the documentation 'GenericSync Error codes' and 'Service\_Catalogue\_iSocial\_Commons', 'BE-KERR-MEMD-ALL Error Messages' provided by the CIN/NIC.

**Table 1: Description of the possible SOAP fault exceptions.**

| Error code | Component | Description   | Solution/Explanation   |
|------------|-----------|---|--|
| SOA-00001  |           | Service error   | This is the default error sent to the consumer in case more details are unknown.   |
| SOA-01001  | Consumer  | Service call not authenticated                        | From the security information provided; <ul style="list-style-type: none"> <li>• or the consumer could not be identified</li> <li>• or the credentials provided are not correct</li> </ul> |
| SOA-01002  | Consumer  | Service call not authorized                           | The consumer is identified and authenticated, but is not allowed to call the given service.  |
| SOA-02001  | Provider  | Service not available<br>Please contact service desk  | <ul style="list-style-type: none"> <li>• An unexpected error has occurred;</li> <li>• Retries will not work;</li> <li>• Service desk may help with root cause analysis.</li> </ul>         |
| SOA-02002  | Provider  | Service temporarily not available<br>Please try later | <ul style="list-style-type: none"> <li>• An unexpected error has occurred;</li> <li>• Retries should work;</li> <li>• If the problem persists service desk may help.</li> </ul>            |
| SOA-03001  | Consumer  | Malformed message                                     | This is the default error for content related errors in case more details are unknown.   |
| SOA-03002  | Consumer  | Message must be SOAP                                  | Message does not respect the SOAP standard.  |
| SOA-03003  | Consumer  | Message must contain SOAP body                        | Message respects the SOAP standard, but body is missing.   |
| SOA-03004  | Consumer  | WS-I compliance failure                               | Message does not respect the WS-I standard.  |
| SOA-03005  | Consumer  | WSDL compliance failure                               | Message is not compliant with WSDL in Registry/Repository.   |
| SOA-03006  | Consumer  | XSD compliance failure                                | Message is not compliant with XSD in Registry/Repository.  |
| SOA-03007  | Consumer  | Message content validation failure                    | From the message content (conform XSD): <ul style="list-style-type: none"> <li>• Extended checks on the element format failed;</li> <li>• Cross-checks between fields failed.</li> </ul>   |

**If the cause is a business error, please contact Mycarenet at [ServiceDesk@MyCareNet.be](mailto:ServiceDesk@MyCareNet.be).**

Business error example :

```
<soapenv:Envelope xmlns:soapenv="http://schemas.xmlsoap.org/soap/envelope/">
  <soapenv:Body>
    <soapenv:Fault>
```



```

<faultcode>soapenv:Server</faultcode>
<faultstring>INCORRECT_INSS_DOCTOR_SAML</faultstring>
<detail>
  <urn:BusinessError Id="urn:uuid:dcdc1fe0-6458-4e38-b954-65fe4f6931dc"
  xmlns:urn="urn:be:fgov:ehhealth:errors:soa:v1">
    <Origin>MYCARENET</Origin>
    <Code>INCORRECT_INSS_DOCTOR_SAML</Code>
    <Message xml:lang="en">For 'doctor' the SSIN '12345678912' in the CareProvider element must correspond to the
    'urn:be:fgov:person:ssin' attribute in the saml '23456789123'</Message>
    <urn:Environment>Acceptation</urn:Environment>
  </urn:BusinessError>
</detail>
</soapenv:Fault>
</soapenv:Body>
</soapenv:Envelope>

```

The soap header (only when the received response is not a SOAP fault) contains a message ID, e.g.:

```

<soapenv:Header>
  <add:MessageID
  xmlns:add="http://www.w3.org/2005/08/addressing">6f23cd40-09d2-4d86-b674-
  b311f6bdf4a3</add:MessageID>
</soapenv:Header>

```

This message ID is important for tracking of the errors so when available, please provide it when requesting support.